

# ARFGAP3 antibody - C-terminal region

Rabbit Polyclonal Antibody

Catalog # AI14733

## Product Information

---

<b>Application</b>	WB
<b>Primary Accession</b>	<a href="#">Q9NP61</a>
<b>Other Accession</b>	<a href="#">NM_014570</a> , <a href="#">NP_055385</a>
<b>Reactivity</b>	Human, Rat, Pig, Dog, Horse, Bovine
<b>Predicted</b>	Human, Dog, Horse
<b>Host</b>	Rabbit
<b>Clonality</b>	Polyclonal
<b>Calculated MW</b>	56928

## Additional Information

---

<b>Gene ID</b>	26286
<b>Alias Symbol</b>	ARFGAP1, FLJ45618
<b>Other Names</b>	ADP-ribosylation factor GTPase-activating protein 3, ARF GAP 3, ARFGAP3, ARFGAP1
<b>Format</b>	Liquid. Purified antibody supplied in 1x PBS buffer with 0.09% (w/v) sodium azide and 2% sucrose.
<b>Reconstitution &amp; Storage</b>	Add 50 ul of distilled water. Final anti-ARFGAP3 antibody concentration is 1 mg/ml in PBS buffer with 2% sucrose. For longer periods of storage, store at 20°C. Avoid repeat freeze-thaw cycles.
<b>Precautions</b>	ARFGAP3 antibody - C-terminal region is for research use only and not for use in diagnostic or therapeutic procedures.

## Protein Information

---

<b>Name</b>	ARFGAP3
<b>Synonyms</b>	ARFGAP1
<b>Function</b>	GTPase-activating protein (GAP) for ADP ribosylation factor 1 (ARF1). Hydrolysis of ARF1-bound GTP may lead to dissociation of coatomer from Golgi-derived membranes to allow fusion with target membranes.
<b>Cellular Location</b>	Cytoplasm. Golgi apparatus membrane; Peripheral membrane protein; Cytoplasmic side. Note=Also found on peripheral punctate structures likely to be endoplasmic reticulum-Golgi intermediate compartment

<b>Tissue Location</b>	Widely expressed. Highest expression in endocrine glands (pancreas, pituitary gland, salivary gland, and prostate) and testis with a much higher expression in the testis than in the ovary
------------------------	---

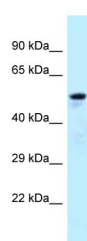
## References

---

Zhang C.,et al.Genomics 63:400-408(2000).  
 Collins J.E.,et al.Genome Res. 13:27-36(2003).  
 Collins J.E.,et al.Genome Biol. 5:R84.1-R84.11(2004).  
 Dunham I.,et al.Nature 402:489-495(1999).  
 Bechtel S.,et al.BMC Genomics 8:399-399(2007).

## Images

---



WB Suggested Anti-ARFGAP3 Antibody Titration: 0.125  
 $\mu$ g/ml  
 Positive Control: Fetal Lung

Please note: All products are 'FOR RESEARCH USE ONLY. NOT FOR USE IN DIAGNOSTIC OR THERAPEUTIC PROCEDURES'.