

TOM1L1 antibody - C-terminal region

Rabbit Polyclonal Antibody

Catalog # AI14735

Product Information

Application	WB
Primary Accession	O75674
Other Accession	NM_005486 , NP_005477
Reactivity	Human, Rat, Rabbit
Predicted	Human, Rabbit
Host	Rabbit
Clonality	Polyclonal
Calculated MW	52989

Additional Information

Gene ID	10040
Alias Symbol	OK/KNS-CL3, SRCASM
Other Names	TOM1-like protein 1, Src-activating and signaling molecule protein, Target of Myb-like protein 1, TOM1L1, SRCASM
Format	Liquid. Purified antibody supplied in 1x PBS buffer with 0.09% (w/v) sodium azide and 2% sucrose.
Reconstitution & Storage	Add 50 ul of distilled water. Final anti-TOM1L1 antibody concentration is 1 mg/ml in PBS buffer with 2% sucrose. For longer periods of storage, store at 20°C. Avoid repeat freeze-thaw cycles.
Precautions	TOM1L1 antibody - C-terminal region is for research use only and not for use in diagnostic or therapeutic procedures.

Protein Information

Name	TOM1L1
Synonyms	SRCASM
Function	Probable adapter protein involved in signaling pathways. Interacts with the SH2 and SH3 domains of various signaling proteins when it is phosphorylated. May promote FYN activation, possibly by disrupting intramolecular SH3-dependent interactions (By similarity).
Cellular Location	Golgi apparatus, Golgi stack. Endosome membrane. Cytoplasm. Membrane; Peripheral membrane protein; Cytoplasmic side. Note=A small proportion is membrane-associated

References

Seroussi E.,et al.Genomics 57:380-388(1999).

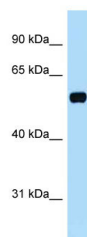
Ota T.,et al.Nat. Genet. 36:40-45(2004).

Suzuki Y.,et al.Submitted (APR-2005) to the EMBL/GenBank/DDBJ databases.

Zody M.C.,et al.Nature 440:1045-1049(2006).

Mural R.J.,et al.Submitted (SEP-2005) to the EMBL/GenBank/DDBJ databases.

Images



WB Suggested Anti-TOM1L1 Antibody Titration: 1.0 µg/ml
Positive Control: Fetal Brain

Please note: All products are 'FOR RESEARCH USE ONLY. NOT FOR USE IN DIAGNOSTIC OR THERAPEUTIC PROCEDURES'.