

ENTPD5 antibody - N-terminal region

Rabbit Polyclonal Antibody
Catalog # AI14762

Product Information

Application	WB
Primary Accession	O75356
Other Accession	NM_001249 , NP_001240
Reactivity	Human, Mouse, Rat, Rabbit, Pig, Dog, Guinea Pig, Horse, Bovine
Predicted	Human, Mouse, Rat, Rabbit, Pig, Dog, Guinea Pig, Horse, Bovine
Host	Rabbit
Clonality	Polyclonal
Calculated MW	47517

Additional Information

Gene ID	957
Alias Symbol Other Names	CD39L4, MGC163357, MGC163359, NTPDase-5, PCPH Ectonucleoside triphosphate diphosphohydrolase 5, NTPDase 5, 3.6.1.6, CD39 antigen-like 4, ER-UDPase, Guanosine-diphosphatase ENTPD5, GDPase ENTPD5, 3.6.1.42, Nucleoside diphosphatase, Uridine-diphosphatase ENTPD5, UDPase ENTPD5, ENTPD5, CD39L4, PCPH
Format	Liquid. Purified antibody supplied in 1x PBS buffer with 0.09% (w/v) sodium azide and 2% sucrose.
Reconstitution & Storage	Add 50 ul of distilled water. Final anti-ENTPD5 antibody concentration is 1 mg/ml in PBS buffer with 2% sucrose. For longer periods of storage, store at 20°C. Avoid repeat freeze-thaw cycles.
Precautions	ENTPD5 antibody - N-terminal region is for research use only and not for use in diagnostic or therapeutic procedures.

Protein Information

Name	ENTPD5 (HGNC:3367)
Function	Hydrolyzes nucleoside diphosphates with a preference for GDP, IDP and UDP compared to ADP and CDP (PubMed: 10400613 , PubMed: 15698960). In the lumen of the endoplasmic reticulum, hydrolyzes UDP that acts as an end-product feedback inhibitor of the UDP-Glc:glycoprotein glucosyltransferases. UMP can be transported back by an UDP-sugar antiporter to the cytosol where it is consumed to regenerate UDP- glucose. Therefore, it positively regulates protein reglucosylation by clearing UDP from the ER lumen and by promoting the regeneration of UDP-glucose. Protein

reglucosylation is essential to proper glycoprotein folding and quality control in the ER (By similarity).

Cellular Location

Endoplasmic reticulum {ECO:0000250|UniProtKB:Q9WUZ9}. Secreted

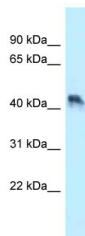
Tissue Location

Expressed in adult liver, kidney, prostate, testis and colon. Much weaker expression in other tissues

References

Chadwick B.P.,et al.Genomics 50:357-367(1998).
Recio J.A.,et al.Mol. Carcinog. 27:229-236(2000).
Murphy-Piedmonte D.M.,et al.Biochim. Biophys. Acta 1747:251-259(2005).
Heilig R.,et al.Nature 421:601-607(2003).
Mural R.J.,et al.Submitted (JUL-2005) to the EMBL/GenBank/DDBJ databases.

Images



WB Suggested Anti-ENTPD5 Antibody Titration: 1.0 µg/ml
Positive Control: HT1080 Whole Cell

Please note: All products are 'FOR RESEARCH USE ONLY. NOT FOR USE IN DIAGNOSTIC OR THERAPEUTIC PROCEDURES'.