

AGMAT antibody - N-terminal region

Rabbit Polyclonal Antibody

Catalog # AI14781

Product Information

Application	WB
Primary Accession	Q9BSE5
Other Accession	NM_024758 , NP_079034
Reactivity	Human, Mouse, Rat, Rabbit, Zebrafish, Pig, Dog, Horse, Bovine, Yeast
Predicted	Rabbit, Zebrafish, Dog, Bovine
Host	Rabbit
Clonality	Polyclonal
Calculated MW	37660

Additional Information

Gene ID	79814
Alias Symbol	FLJ23384
Other Names	Agmatinase, mitochondrial, 3.5.3.11, Agmatine ureohydrolase, AUH, AGMAT
Format	Liquid. Purified antibody supplied in 1x PBS buffer with 0.09% (w/v) sodium azide and 2% sucrose.
Reconstitution & Storage	Add 50 ul of distilled water. Final anti-AGMAT antibody concentration is 1 mg/ml in PBS buffer with 2% sucrose. For longer periods of storage, store at 20°C. Avoid repeat freeze-thaw cycles.
Precautions	AGMAT antibody - N-terminal region is for research use only and not for use in diagnostic or therapeutic procedures.

Protein Information

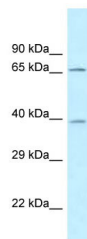
Name	AGMAT
Synonyms	GDAH {ECO:0000303 PubMed:36543883}
Function	Hydrolyzes linear guanidino acids to form urea and the corresponding amines. Displays specificity for substrates having a negatively charged head group and short chains including taurocyamine, guanidino propanoic and butanoic acids. May protect cells by detoxifying potentially harmful amounts of guanidino acids. Metabolizes L-arginine with low efficiency.
Cellular Location	Mitochondrion.
Tissue Location	Highly expressed in liver and kidney. Also found in skeletal muscle, fetal liver,

brain, testis, skin and the gastrointestinal tract. Within brain, expression is higher in the cerebral cortex with lower levels in the medulla and spinal cord

References

Mistry S.K.,et al.Am. J. Physiol. 282:G375-G381(2002).
Ota T.,et al.Nat. Genet. 36:40-45(2004).
Gregory S.G.,et al.Nature 441:315-321(2006).
Iyer R.K.,et al.Mol. Genet. Metab. 75:209-218(2002).
Burkard T.R.,et al.BMC Syst. Biol. 5:17-17(2011).

Images



WB Suggested Anti-AGMAT Antibody Titration: 1.0 µg/ml
Positive Control: Fetal Brain

Please note: All products are 'FOR RESEARCH USE ONLY. NOT FOR USE IN DIAGNOSTIC OR THERAPEUTIC PROCEDURES'.