

# CDK20 antibody - N-terminal region

Rabbit Polyclonal Antibody

Catalog # AI14786

## Product Information

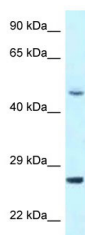
|                          |   |
|--------------------------|---|
| <b>Application</b>       | WB  |
| <b>Primary Accession</b> | <a href="#">Q8IZL9-2</a>  |
| <b>Other Accession</b>   | <a href="#">NM_001170640</a> , <a href="#">NP_001164111</a>               |
| <b>Reactivity</b>        | Human, Mouse, Rat, Rabbit, Zebrafish, Pig, Dog, Guinea Pig, Horse, Bovine |
| <b>Predicted</b>         | Human, Mouse, Rat, Zebrafish, Pig, Guinea Pig, Horse, Bovine              |
| <b>Host</b>              | Rabbit  |
| <b>Clonality</b>         | Polyclonal  |
| <b>Calculated MW</b>     | 26 kDa  |

## Additional Information

|                                     |  |
|-------------------------------------|--|
| <b>Alias Symbol</b>                 | CCRK, CDCH, P42, PNQALRE   |
| <b>Format</b>                       | Liquid. Purified antibody supplied in 1x PBS buffer with 0.09% (w/v) sodium azide and 2% sucrose.  |
| <b>Reconstitution &amp; Storage</b> | Add 50 ul of distilled water. Final anti-CDK20 antibody concentration is 1 mg/ml in PBS buffer with 2% sucrose. For longer periods of storage, store at 20°C. Avoid repeat freeze-thaw cycles. |
| <b>Precautions</b>                  | CDK20 antibody - N-terminal region is for research use only and not for use in diagnostic or therapeutic procedures.   |

## Protein Information

## Images



WB Suggested Anti-CDK20 Antibody Titration: 1.0 µg/ml  
Positive Control: Jurkat Whole Cell