

GOLPH3 antibody - middle region

Rabbit Polyclonal Antibody

Catalog # AI14787

Product Information

Application	WB
Primary Accession	Q9H4A6
Other Accession	NM_022130 , NP_071413
Reactivity	Human, Mouse, Rat, Rabbit, Zebrafish, Dog, Guinea Pig, Horse, Bovine
Predicted	Human, Mouse, Rat, Rabbit, Zebrafish, Pig, Chicken, Dog, Bovine
Host	Rabbit
Clonality	Polyclonal
Calculated MW	33811

Additional Information

Gene ID	64083
Alias Symbol	FLJ90675, GOPP1, GPP34, MIDAS
Other Names	Golgi phosphoprotein 3, Coat protein GPP34, Mitochondrial DNA absence factor, MIDAS, GOLPH3, GPP34
Format	Liquid. Purified antibody supplied in 1x PBS buffer with 0.09% (w/v) sodium azide and 2% sucrose.
Reconstitution & Storage	Add 50 ul of distilled water. Final anti-GOLPH3 antibody concentration is 1 mg/ml in PBS buffer with 2% sucrose. For longer periods of storage, store at 20°C. Avoid repeat freeze-thaw cycles.
Precautions	GOLPH3 antibody - middle region is for research use only and not for use in diagnostic or therapeutic procedures.

Protein Information

Name	GOLPH3
Synonyms	GPP34
Function	Phosphatidylinositol-4-phosphate-binding protein that links Golgi membranes to the cytoskeleton and may participate in the tensile force required for vesicle budding from the Golgi. Thereby, may play a role in Golgi membrane trafficking and could indirectly give its flattened shape to the Golgi apparatus. May also bind to the coatamer to regulate Golgi membrane trafficking. May play a role in anterograde transport from the Golgi to the plasma membrane and regulate secretion. Has also been involved in the control of the localization of Golgi enzymes through interaction with their

cytoplasmic part. May play an indirect role in cell migration. Has also been involved in the modulation of mTOR signaling. May also be involved in the regulation of mitochondrial lipids biosynthesis.

Cellular Location

Golgi apparatus, Golgi stack membrane; Peripheral membrane protein; Cytoplasmic side. Golgi apparatus, trans-Golgi network membrane; Peripheral membrane protein; Cytoplasmic side Mitochondrion intermembrane space. Cell membrane Endosome. Note=Phosphatidylinositol 4-phosphate-binding and oligomerization participate in the recruitment onto Golgi membranes.

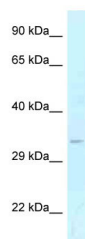
Tissue Location

Detected in muscle fibers of patients with mitochondrial diseases; not detected in normal muscle fibers

References

Bell A.W.,et al.J. Biol. Chem. 276:5152-5165(2001).
Ota T.,et al.Nat. Genet. 36:40-45(2004).
Gregory S.G.,et al.Nature 441:315-321(2006).
Bechtel S.,et al.BMC Genomics 8:399-399(2007).
Nakashima-Kamimura N.,et al.J. Cell Sci. 118:5357-5367(2005).

Images



WB Suggested Anti-GOLPH3 Antibody Titration: 1.0 µg/ml
Positive Control: Fetal Liver

Please note: All products are 'FOR RESEARCH USE ONLY. NOT FOR USE IN DIAGNOSTIC OR THERAPEUTIC PROCEDURES'.