

GRINL1A antibody - C-terminal region

Rabbit Polyclonal Antibody

Catalog # AI14793

Product Information

Application	WB
Primary Accession	P0CAP2
Other Accession	NM_015532 , NP_056347
Reactivity	Human, Mouse, Rat, Rabbit, Dog, Guinea Pig, Bovine
Predicted	Human, Mouse, Rat, Rabbit, Pig, Dog, Guinea Pig, Bovine
Host	Rabbit
Clonality	Polyclonal
Calculated MW	41740

Additional Information

Gene ID	81488
Alias Symbol Other Names	DKFZp586F1918, GCOM1, Gdown, Gdown1, GRINL1A DNA-directed RNA polymerase II subunit GRINL1A, DNA-directed RNA polymerase II subunit M, Glutamate receptor-like protein 1A, POLR2M, GRINL1A
Format	Liquid. Purified antibody supplied in 1x PBS buffer with 0.09% (w/v) sodium azide and 2% sucrose.
Reconstitution & Storage	Add 50 ul of distilled water. Final anti-GRINL1A antibody concentration is 1 mg/ml in PBS buffer with 2% sucrose. For longer periods of storage, store at 20°C. Avoid repeat freeze-thaw cycles.
Precautions	GRINL1A antibody - C-terminal region is for research use only and not for use in diagnostic or therapeutic procedures.

Protein Information

Name	POLR2M
Synonyms	GRINL1A
Function	[Isoform 1]: Appears to be a stable component of the Pol II(G) complex form of RNA polymerase II (Pol II). Pol II synthesizes mRNA precursors and many functional non-coding RNAs and is the central component of the basal RNA polymerase II transcription machinery. May play a role in the Mediator complex-dependent regulation of transcription activation. Acts as a negative regulator of transcriptional activation; this repression is relieved by the Mediator complex, which restores Pol II(G) activator-dependent transcription

to a level equivalent to that of Pol II.

Cellular Location

[Isoform 1]: Nucleus.

Tissue Location

Detected in adult an fetal brain. Detected in heart, kidney, skeletal muscle, small intestine, lung, prostate and testis.

References

Roginski R.S.,et al.Cytogenet. Cell Genet. 93:143-144(2001).

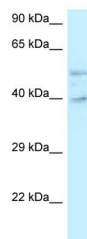
Roginski R.S.,et al.Genomics 84:265-276(2004).

Ota T.,et al.Nat. Genet. 36:40-45(2004).

Zody M.C.,et al.Nature 440:671-675(2006).

Mural R.J.,et al.Submitted (JUL-2005) to the EMBL/GenBank/DDBJ databases.

Images



WB Suggested Anti-GRINL1A Antibody Titration: 1.0 µg/ml
Positive Control: Placenta

Please note: All products are 'FOR RESEARCH USE ONLY. NOT FOR USE IN DIAGNOSTIC OR THERAPEUTIC PROCEDURES'.