

RASAL1 Antibody - middle region

Rabbit Polyclonal Antibody

Catalog # AI14795

Product Information

| | |
|-------------------|------------------------|
| Application | WB |
| Primary Accession | O95294 |
| Reactivity | Human |
| Host | Rabbit |
| Clonality | Polyclonal |
| Calculated MW | 90016 |

Additional Information

| | |
|-----------------------------|---|
| Gene ID | 8437 |
| Alias Symbol Other Names | RASAL1, RASAL, RasGAP-activating-like protein 1, RASAL1, RASAL |
| Format | Liquid. Purified antibody supplied in 1x PBS buffer with 0.09% (w/v) sodium azide and 2% sucrose. |
| Reconstitution & Storage | Add 50 μ l of distilled water. Final Anti-RASAL1 antibody concentration is 1 mg/ml in PBS buffer with 2% sucrose. For longer periods of storage, store at -20°C. Avoid repeat freeze-thaw cycles. |
| Precautions | RASAL1 Antibody - middle region is for research use only and not for use in diagnostic or therapeutic procedures. |

Protein Information

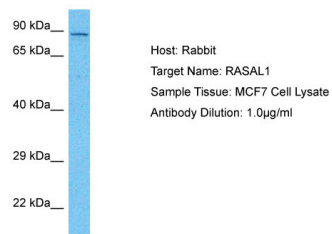
| | |
|-----------------|--|
| Name | RASAL1 (HGNC:9873) |
| Function | Probable inhibitory regulator of the Ras-cyclic AMP pathway (PubMed: 9751798). Plays a role in dendrite formation by melanocytes (PubMed: 23999003). |
| Tissue Location | Highly expressed in thyroid and adrenal medulla, lower expression in brain, spinal cord and trachea (PubMed:9751798) Expressed in melanocytes (PubMed:23999003) |

References

Allen M.,et al.Gene 218:17-25(1998).

Totoki Y.,et al.Submitted (MAR-2005) to the EMBL/GenBank/DDBJ databases.
Scherer S.E.,et al.Nature 440:346-351(2006).
Wiemann S.,et al.Genome Res. 11:422-435(2001).
Burkard T.R.,et al.BMC Syst. Biol. 5:17-17(2011).

Images



Host: Rabbit
Target Name: RASAL1
Sample Tissue: MCF7 Whole Cell lysates
Antibody Dilution: 1.0µg/ml

Please note: All products are 'FOR RESEARCH USE ONLY. NOT FOR USE IN DIAGNOSTIC OR THERAPEUTIC PROCEDURES'.