

KIAA1279 antibody - C-terminal region

Rabbit Polyclonal Antibody

Catalog # AI14811

Product Information

Application	WB
Primary Accession	Q96EK5
Other Accession	NM_015634 , NP_056449
Reactivity	Human, Mouse, Rat, Rabbit, Dog, Guinea Pig, Horse, Bovine
Predicted	Dog
Host	Rabbit
Clonality	Polyclonal
Calculated MW	71814

Additional Information

Gene ID	26128
Alias Symbol	DKFZp586B0923, KBP, TTC20
Other Names	KIF1-binding protein, KIAA1279, KBP
Format	Liquid. Purified antibody supplied in 1x PBS buffer with 0.09% (w/v) sodium azide and 2% sucrose.
Reconstitution & Storage	Add 50 ul of distilled water. Final anti-KIAA1279 antibody concentration is 1 mg/ml in PBS buffer with 2% sucrose. For longer periods of storage, store at 20°C. Avoid repeat freeze-thaw cycles.
Precautions	KIAA1279 antibody - C-terminal region is for research use only and not for use in diagnostic or therapeutic procedures.

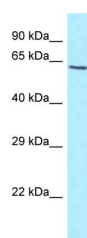
Protein Information

Name	KIFBP (HGNC:23419)
Function	Activator of KIF1B plus-end-directed microtubule motor activity (PubMed: 16225668). Required for organization of axonal microtubules, and axonal outgrowth and maintenance during peripheral and central nervous system development.
Cellular Location	Cytoplasm, cytoskeleton
Tissue Location	Highly expressed in heart, brain, ovary, testis, spinal cord and all specific brain regions examined. Moderate expressed at intermediate level in all other adult tissues examined, as well as in fetal liver and brain. Not expressed in blood leukocytes

References

Wozniak M.J.,et al.BMC Cell Biol. 6:35-35(2005).
Nagase T.,et al.DNA Res. 6:337-345(1999).
Nakajima D.,et al.DNA Res. 9:99-106(2002).
Ota T.,et al.Nat. Genet. 36:40-45(2004).
Deloukas P.,et al.Nature 429:375-381(2004).

Images



WB Suggested Anti-KIAA1279 Antibody Titration: 1.0
µg/ml
Positive Control: HT1080 Whole Cell

Please note: All products are 'FOR RESEARCH USE ONLY. NOT FOR USE IN DIAGNOSTIC OR THERAPEUTIC PROCEDURES'.