

# AMMECR1 Antibody - C-terminal region

Rabbit Polyclonal Antibody

Catalog # AI14816

## Product Information

---

<b>Application</b>	WB
<b>Primary Accession</b>	<a href="#">Q9Y4X0</a>
<b>Other Accession</b>	<a href="#">NM_001025580</a> , <a href="#">NP_001020751</a>
<b>Reactivity</b>	Human, Mouse, Rat, Rabbit, Zebrafish, Pig, Dog, Guinea Pig, Horse, Bovine
<b>Predicted</b>	Human, Mouse, Rat, Rabbit, Zebrafish, Pig, Dog, Guinea Pig, Horse, Bovine
<b>Host</b>	Rabbit
<b>Clonality</b>	Polyclonal
<b>Calculated MW</b>	35463

## Additional Information

---

<b>Gene ID</b>	9949
<b>Alias Symbol</b>	AMMERC1
<b>Other Names</b>	AMME syndrome candidate gene 1 protein, AMMECR1
<b>Format</b>	Liquid. Purified antibody supplied in 1x PBS buffer with 0.09% (w/v) sodium azide and 2% sucrose.
<b>Reconstitution &amp; Storage</b>	Add 50 ul of distilled water. Final anti-AMMECR1 antibody concentration is 1 mg/ml in PBS buffer with 2% sucrose. For longer periods of storage, store at 20°C. Avoid repeat freeze-thaw cycles.
<b>Precautions</b>	AMMECR1 Antibody - C-terminal region is for research use only and not for use in diagnostic or therapeutic procedures.

## Protein Information

---

<b>Name</b>	AMMECR1
<b>Cellular Location</b>	Nucleus.

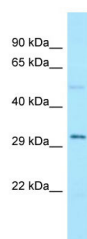
## References

---

Vitelli F.,et al.Genomics 55:335-340(1999).  
Ota T.,et al.Nat. Genet. 36:40-45(2004).  
Ross M.T.,et al.Nature 434:325-337(2005).

## Images

---



WB Suggested Anti-AMMECR1 Antibody Titration: 1.0  
µg/ml  
Positive Control: Fetal Lung

Please note: All products are 'FOR RESEARCH USE ONLY. NOT FOR USE IN DIAGNOSTIC OR THERAPEUTIC PROCEDURES'.