

# BSPRY antibody - N-terminal region

Rabbit Polyclonal Antibody

Catalog # AI14817

## Product Information

---

<b>Application</b>	WB
<b>Primary Accession</b>	<a href="#">Q5W0U4</a>
<b>Other Accession</b>	<a href="#">NM_017688</a> , <a href="#">NP_060158</a>
<b>Reactivity</b>	Human, Mouse, Rat, Pig, Dog, Guinea Pig, Horse, Bovine
<b>Predicted</b>	Human, Mouse, Rat, Dog, Horse, Bovine
<b>Host</b>	Rabbit
<b>Clonality</b>	Polyclonal
<b>Calculated MW</b>	44381

## Additional Information

---

<b>Gene ID</b>	54836
<b>Alias Symbol</b>	FLJ20150
<b>Other Names</b>	B box and SPRY domain-containing protein, BSPRY
<b>Format</b>	Liquid. Purified antibody supplied in 1x PBS buffer with 0.09% (w/v) sodium azide and 2% sucrose.
<b>Reconstitution &amp; Storage</b>	Add 50 ul of distilled water. Final anti-BSPRY antibody concentration is 1 mg/ml in PBS buffer with 2% sucrose. For longer periods of storage, store at 20°C. Avoid repeat freeze-thaw cycles.
<b>Precautions</b>	BSPRY antibody - N-terminal region is for research use only and not for use in diagnostic or therapeutic procedures.

## Protein Information

---

<b>Name</b>	BSPRY
<b>Function</b>	May regulate epithelial calcium transport by inhibiting TRPV5 activity.
<b>Cellular Location</b>	Cytoplasm. Membrane; Peripheral membrane protein

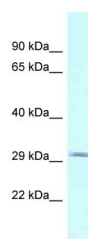
## References

---

Schenker T., et al. Biochim. Biophys. Acta 1493:255-258(2000).  
Humphray S.J., et al. Nature 429:369-374(2004).  
Mural R.J., et al. Submitted (JUL-2005) to the EMBL/GenBank/DDBJ databases.

## Images

---



WB Suggested Anti-BSPRY Antibody Titration: 1.0 µg/ml  
Positive Control: Fetal Heart

Please note: All products are 'FOR RESEARCH USE ONLY. NOT FOR USE IN DIAGNOSTIC OR THERAPEUTIC PROCEDURES'.