

FGD3 antibody - middle region

Rabbit Polyclonal Antibody

Catalog # AI14818

Product Information

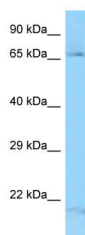
Application	WB
Primary Accession	Q5JSP0-2
Other Accession	NM_033086 , NP_149077
Reactivity	Human, Mouse, Rat, Rabbit, Pig, Horse, Bovine
Predicted	Human, Mouse, Rat, Rabbit, Chicken, Horse, Bovine
Host	Rabbit
Clonality	Polyclonal
Calculated MW	70 kDa

Additional Information

Alias Symbol	FLJ00004, MGC117260, ZFYVE5
Format	Liquid. Purified antibody supplied in 1x PBS buffer with 0.09% (w/v) sodium azide and 2% sucrose.
Reconstitution & Storage	Add 50 ul of distilled water. Final anti-FGD3 antibody concentration is 1 mg/ml in PBS buffer with 2% sucrose. For longer periods of storage, store at 20°C. Avoid repeat freeze-thaw cycles.
Precautions	FGD3 antibody - middle region is for research use only and not for use in diagnostic or therapeutic procedures.

Protein Information

Images



WB Suggested Anti-FGD3 Antibody Titration: 1.0 µg/ml
Positive Control: Fetal Lung