

RSL1D1 antibody - C-terminal region

Rabbit Polyclonal Antibody

Catalog # AI14832

Product Information

Application	WB
Primary Accession	Q14677
Other Accession	NM_001195556 , NP_001182485
Reactivity	Human
Predicted	Human
Host	Rabbit
Clonality	Polyclonal
Calculated MW	68259

Additional Information

Gene ID	9685
Alias Symbol Other Names	CSIG, DKFZP564M182, L12, MGC138433, MGC142259, PBK1, UTP30 Clathrin interactor 1, Clathrin-interacting protein localized in the trans-Golgi region, Clint, Enthoprotin, Epsin-4, Epsin-related protein, EpsinR, CLINT1, ENTH, EPN4, EPNR, KIAA0171
Format	Liquid. Purified antibody supplied in 1x PBS buffer with 0.09% (w/v) sodium azide and 2% sucrose.
Reconstitution & Storage	Add 50 ul of distilled water. Final anti-RSL1D1 antibody concentration is 1 mg/ml in PBS buffer with 2% sucrose. For longer periods of storage, store at 20°C. Avoid repeat freeze-thaw cycles.
Precautions	RSL1D1 antibody - C-terminal region is for research use only and not for use in diagnostic or therapeutic procedures.

Protein Information

Name	CLINT1
Synonyms	ENTH, EPN4, EPNR, KIAA0171
Function	Binds to membranes enriched in phosphatidylinositol 4,5- biphosphate (PtdIns(4,5)P2). May have a role in transport via clathrin-coated vesicles from the trans-Golgi network to endosomes. Stimulates clathrin assembly.
Cellular Location	Cytoplasm. Cytoplasm, perinuclear region. Membrane; Peripheral membrane protein. Cytoplasmic vesicle, clathrin- coated vesicle. Note=Found throughout the cell, with the exception of the cell surface. Concentrated in the

perinuclear region and associated with clathrin-coated vesicles close to the trans-Golgi network

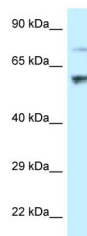
Tissue Location

Ubiquitously expressed at low to intermediate levels.

References

Wasiak S.,et al.J. Cell Biol. 158:855-862(2002).
Hong W.,et al.Submitted (OCT-2001) to the EMBL/GenBank/DDBJ databases.
Nagase T.,et al.DNA Res. 3:17-24(1996).
Ota T.,et al.Nat. Genet. 36:40-45(2004).
Schmutz J.,et al.Nature 431:268-274(2004).

Images



WB Suggested Anti-RSL1D1 Antibody Titration: 1.0 µg/ml
Positive Control: Hela Whole Cell
There is BioGPS gene expression data showing that RSL1D1 is expressed in HeLa

Please note: All products are 'FOR RESEARCH USE ONLY. NOT FOR USE IN DIAGNOSTIC OR THERAPEUTIC PROCEDURES'.