

# SASS6 antibody - C-terminal region

Rabbit Polyclonal Antibody

Catalog # AI14833

## Product Information

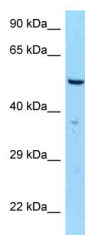
<b>Application</b>	WB
<b>Primary Accession</b>	<a href="#">Q495U0</a>
<b>Other Accession</b>	<a href="#">NM_194292</a> , <a href="#">AAI01027</a>
<b>Reactivity</b>	Human, Mouse, Rat, Rabbit, Dog, Guinea Pig, Horse, Bovine
<b>Predicted</b>	Human, Mouse, Rabbit, Dog, Guinea Pig, Horse, Bovine
<b>Host</b>	Rabbit
<b>Clonality</b>	Polyclonal
<b>Calculated MW</b>	53 kDa

## Additional Information

<b>Alias Symbol</b>	FLJ22097, MGC119440, SAS-6, SAS6
<b>Format</b>	Liquid. Purified antibody supplied in 1x PBS buffer with 0.09% (w/v) sodium azide and 2% sucrose.
<b>Reconstitution &amp; Storage</b>	Add 50 ul of distilled water. Final anti-SASS6 antibody concentration is 1 mg/ml in PBS buffer with 2% sucrose. For longer periods of storage, store at 20°C. Avoid repeat freeze-thaw cycles.
<b>Precautions</b>	SASS6 antibody - C-terminal region is for research use only and not for use in diagnostic or therapeutic procedures.

## Protein Information

## Images



WB Suggested Anti-SASS6 Antibody Titration: 1.0 µg/ml  
Positive Control: MCF7 Whole Cell