

EDEM3 antibody - C-terminal region

Rabbit Polyclonal Antibody

Catalog # AI14834

Product Information

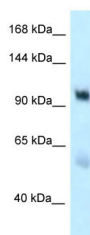
Application	WB
Primary Accession	Q9P1W8-4
Other Accession	NM_001039508 , NP_001034597
Reactivity	Human, Mouse, Rat, Pig, Dog, Horse, Bovine
Predicted	Human, Mouse, Rat, Pig, Dog, Horse, Bovine
Host	Rabbit
Clonality	Polyclonal
Calculated MW	98 kDa

Additional Information

Alias Symbol	C1orf22
Format	Liquid. Purified antibody supplied in 1x PBS buffer with 0.09% (w/v) sodium azide and 2% sucrose.
Reconstitution & Storage	Add 50 ul of distilled water. Final anti-EDEM3 antibody concentration is 1 mg/ml in PBS buffer with 2% sucrose. For longer periods of storage, store at 20°C. Avoid repeat freeze-thaw cycles.
Precautions	EDEM3 antibody - C-terminal region is for research use only and not for use in diagnostic or therapeutic procedures.

Protein Information

Images



WB Suggested Anti-EDEM3 Antibody Titration: 1.0 µg/ml
Positive Control: Placenta