

GPR37L1 antibody - C-terminal region

Rabbit Polyclonal Antibody

Catalog # AI14837

Product Information

Application	WB
Primary Accession	O60883
Other Accession	NM_004767 , NP_004758
Reactivity	Human, Mouse, Rat, Pig, Dog, Horse
Predicted	Human, Mouse, Rat, Dog, Horse
Host	Rabbit
Clonality	Polyclonal
Calculated MW	52771

Additional Information

Gene ID	9283
Alias Symbol Other Names	ET(B)R-LP-2, ETBR-LP-2 Prosaposin receptor GPR37L1, Endothelin B receptor-like protein 2, ETBR-LP-2, G-protein coupled receptor 37-like 1, GPR37L1, ETBRLP2
Format	Liquid. Purified antibody supplied in 1x PBS buffer with 0.09% (w/v) sodium azide and 2% sucrose.
Reconstitution & Storage	Add 50 ul of distilled water. Final anti-GPR37L1 antibody concentration is 1 mg/ml in PBS buffer with 2% sucrose. For longer periods of storage, store at 20°C. Avoid repeat freeze-thaw cycles.
Precautions	GPR37L1 antibody - C-terminal region is for research use only and not for use in diagnostic or therapeutic procedures.

Protein Information

Name	GPR37L1
Synonyms	ETBRLP2
Function	G-protein coupled receptor (PubMed: 27072655). Has been shown to bind the neuroprotective and glioprotective factor prosaposin (PSAP), leading to endocytosis followed by an ERK phosphorylation cascade (PubMed: 23690594). However, other studies have shown that prosaposin does not increase activity (PubMed: 27072655 , PubMed: 28688853). It has been suggested that GPR37L1 is a constitutively active receptor which signals through the guanine nucleotide-binding protein G(s) subunit alpha (PubMed: 27072655). Participates in the regulation of postnatal cerebellar

development by modulating the Shh pathway (By similarity). Regulates baseline blood pressure in females and protects against cardiovascular stress in males (By similarity). Mediates inhibition of astrocyte glutamate transporters and reduction in neuronal N-methyl-D-aspartate receptor activity (By similarity).

Cellular Location

Cell membrane; Multi-pass membrane protein. Cell projection, cilium membrane {ECO:0000250|UniProtKB:Q99JG2}; Multi-pass membrane protein. Note=Associates with the basal membrane of Bergmann glia cell primary cilia. {ECO:0000250|UniProtKB:Q99JG2}

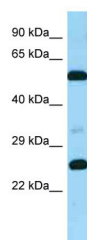
Tissue Location

Expressed in primary cortical astrocytes (at protein level) (PubMed:23690594). Expressed in the central nervous system (PubMed:9539149).

References

Valdenaire O.,et al.FEBS Lett. 424:193-196(1998).
Ota T.,et al.Nat. Genet. 36:40-45(2004).
Suzuki Y.,et al.Submitted (APR-2005) to the EMBL/GenBank/DDBJ databases.
Gregory S.G.,et al.Nature 441:315-321(2006).
Halim A.,et al.J. Proteome Res. 12:573-584(2013).

Images



WB Suggested Anti-GPR37L1 Antibody Titration: 1.0 µg/ml
Positive Control: Fetal Brain

Please note: All products are 'FOR RESEARCH USE ONLY. NOT FOR USE IN DIAGNOSTIC OR THERAPEUTIC PROCEDURES'.