

BZW1 antibody - N-terminal region

Rabbit Polyclonal Antibody

Catalog # AI14842

Product Information

Application	WB
Primary Accession	Q9H714
Other Accession	NM_025113 , NP_079389
Reactivity	Human, Mouse, Rat, Rabbit, Zebrafish, Pig, Dog, Guinea Pig, Horse, Bovine
Predicted	Human, Mouse, Rat, Rabbit, Zebrafish, Pig, Chicken, Dog, Guinea Pig, Horse, Bovine
Host	Rabbit
Clonality	Polyclonal
Calculated MW	73457

Additional Information

Gene ID	80183
Alias Symbol	BZAP45, KIAA0005, Nbla10236
Other Names	Uncharacterized protein KIAA0226-like, KIAA0226L, C13orf18
Format	Liquid. Purified antibody supplied in 1x PBS buffer with 0.09% (w/v) sodium azide and 2% sucrose.
Reconstitution & Storage	Add 50 ul of distilled water. Final anti-BZW1 antibody concentration is 1 mg/ml in PBS buffer with 2% sucrose. For longer periods of storage, store at 20°C. Avoid repeat freeze-thaw cycles.
Precautions	BZW1 antibody - N-terminal region is for research use only and not for use in diagnostic or therapeutic procedures.

Protein Information

Name	RUBCNL (HGNC:20420)
Function	Regulator of autophagy that promotes autophagosome maturation by facilitating the biogenesis of phosphatidylinositol 3-phosphate (PtdIns(3)P) in late steps of autophagy (PubMed: 28306502 , PubMed: 30704899). Acts by antagonizing RUBCN, thereby stimulating phosphatidylinositol 3-kinase activity of the PI3K/PI3KC3 complex (PubMed: 28306502). Following anchorage to the autophagosomal SNARE STX17, promotes the recruitment of PI3K/PI3KC3 and HOPS complexes to the autophagosome to regulate the fusion specificity of autophagosomes with late endosomes/lysosomes (PubMed: 28306502). Binds phosphoinositides phosphatidylinositol 3-phosphate (PtdIns(3)P), 4- phosphate (PtdIns(4)P) and 5-phosphate

(PtdIns(5)P) (PubMed:[28306502](#)). In addition to its role in autophagy, acts as a regulator of lipid and glycogen homeostasis (By similarity). May act as a tumor suppressor (Probable).

Cellular Location

Cytoplasmic vesicle, autophagosome membrane; Peripheral membrane protein. Note=Associates with late autophagic structure (PubMed:28306502). Recruitment to autophagosome membrane is promoted by autophagic stimuli (PubMed:28306502)

Tissue Location

Expressed weakly in cervical carcinoma cell lines.

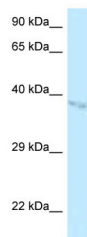
References

Ota T.,et al.Nat. Genet. 36:40-45(2004).

Dunham A.,et al.Nature 428:522-528(2004).

Oppermann F.S.,et al.Mol. Cell. Proteomics 8:1751-1764(2009).

Images



WB Suggested Anti-BZW1 Antibody Titration: 1.0 µg/ml
Positive Control: HepG2 Whole Cell
BZW1 is supported by
BioGPS gene expression data to be expressed in HepG2

Please note: All products are 'FOR RESEARCH USE ONLY. NOT FOR USE IN DIAGNOSTIC OR THERAPEUTIC PROCEDURES'.