

# Mpp6 Antibody - C-terminal region

Rabbit Polyclonal Antibody

Catalog # AI14859

## Product Information

<b>Application</b>	WB
<b>Primary Accession</b>	<a href="#">Q9JLB0</a>
<b>Reactivity</b>	Human, Mouse, Rat, Rabbit, Zebrafish, Pig, Dog, Guinea Pig, Horse, Bovine
<b>Predicted</b>	Human, Mouse, Rat, Rabbit, Zebrafish, Pig, Dog, Guinea Pig, Horse, Bovine
<b>Host</b>	Rabbit
<b>Clonality</b>	Polyclonal
<b>Calculated MW</b>	62631

## Additional Information

<b>Gene ID</b>	56524
<b>Other Names</b>	MAGUK p55 subfamily member 6, Dlgh4 protein, P55T protein, Protein associated with Lin-7 2, Mpp6, Dlgh4, Pals2
<b>Format</b>	Liquid. Purified antibody supplied in 1x PBS buffer with 0.09% (w/v) sodium azide and 2% sucrose.
<b>Reconstitution &amp; Storage</b>	Add 50 ul of distilled water. Final anti-Mpp6 antibody concentration is 1 mg/ml in PBS buffer with 2% sucrose. For longer periods of storage, store at 20°C. Avoid repeat freeze-thaw cycles.
<b>Precautions</b>	Mpp6 Antibody - C-terminal region is for research use only and not for use in diagnostic or therapeutic procedures.

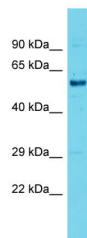
## Protein Information

<b>Name</b>	Pals2 {ECO:0000303   PubMed:10753959, ECO:0000312   MGI:MGI:1927340}
<b>Cellular Location</b>	Membrane; Peripheral membrane protein.

## References

Kamberov E., et al. J. Biol. Chem. 275:11425-11431(2000).  
Lin L., et al. Submitted (JUN-1999) to the EMBL/GenBank/DDBJ databases.  
Shingai T., et al. J. Biol. Chem. 278:35421-35427(2003).

## Images



Host: Rabbit  
Target Name: Mpp6  
Sample Tissue: Mouse Testis lysates  
Antibody Dilution: 1.0µg/ml

Please note: All products are 'FOR RESEARCH USE ONLY. NOT FOR USE IN DIAGNOSTIC OR THERAPEUTIC PROCEDURES'.