

ZC3H11A Antibody - N-terminal region

Rabbit Polyclonal Antibody

Catalog # AI14861

Product Information

Application	WB
Primary Accession	O75152
Other Accession	NM_014827 , NP_055642
Reactivity	Human, Mouse, Rat, Rabbit, Zebrafish, Dog, Guinea Pig, Horse, Bovine
Predicted	Human, Mouse, Rat, Rabbit, Zebrafish, Pig, Dog, Guinea Pig, Horse, Bovine
Host	Rabbit
Clonality	Polyclonal
Calculated MW	89131

Additional Information

Gene ID	9877
Alias Symbol	ZC3HDC11A
Other Names	Zinc finger CCCH domain-containing protein 11A, ZC3H11A, KIAA0663, ZC3HDC11A
Format	Liquid. Purified antibody supplied in 1x PBS buffer with 0.09% (w/v) sodium azide and 2% sucrose.
Reconstitution & Storage	Add 50 ul of distilled water. Final anti-ZC3H11A antibody concentration is 1 mg/ml in PBS buffer with 2% sucrose. For longer periods of storage, store at 20°C. Avoid repeat freeze-thaw cycles.
Precautions	ZC3H11A Antibody - N-terminal region is for research use only and not for use in diagnostic or therapeutic procedures.

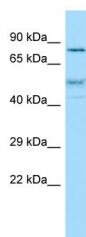
Protein Information

Name	ZC3H11A
Synonyms	KIAA0663, ZC3HDC11A
Function	Through its association with TREX complex components, may participate in the export and post-transcriptional coordination of selected mRNA transcripts, including those required to maintain the metabolic processes in embryonic cells (PubMed: 22928037 , PubMed: 37356722). Binds RNA (PubMed: 29610341 , PubMed: 37356722).
Cellular Location	Nucleus. Nucleus speckle. Note=Retained in nuclear speckles though interaction with PABPN1.

References

Ishikawa K.,et al.DNA Res. 5:169-176(1998).
Ohara O.,et al.Submitted (JAN-2004) to the EMBL/GenBank/DDBJ databases.
Bechtel S.,et al.BMC Genomics 8:399-399(2007).
Olsen J.V.,et al.Cell 127:635-648(2006).
Beausoleil S.A.,et al.Nat. Biotechnol. 24:1285-1292(2006).

Images



Host: Rabbit
Target Name: ZC3H11A
Sample Tissue: NCI-H226 Whole cell lysate
S
Antibody Dilution: 1.0µg/mlZC3H11A is strongly supported by BioGPS gene expression data to be expressed in NCI-H226

Please note: All products are 'FOR RESEARCH USE ONLY. NOT FOR USE IN DIAGNOSTIC OR THERAPEUTIC PROCEDURES'.