

# GTPBP5 Antibody - N-terminal region

Rabbit Polyclonal Antibody

Catalog # AI14873

## Product Information

---

<b>Application</b>	WB
<b>Primary Accession</b>	<a href="#">Q9H4K7</a>
<b>Other Accession</b>	<a href="#">NM_015666</a> , <a href="#">NP_056481</a>
<b>Reactivity</b>	Human, Mouse, Rat, Rabbit, Zebrafish, Guinea Pig, Horse, Bovine
<b>Predicted</b>	Human, Mouse, Rat, Rabbit, Zebrafish, Pig, Guinea Pig, Horse, Bovine
<b>Host</b>	Rabbit
<b>Clonality</b>	Polyclonal
<b>Calculated MW</b>	43955

## Additional Information

---

<b>Gene ID</b>	26164
<b>Alias Symbol</b> <b>Other Names</b>	FLJ10741, MGC29512, ObgH1, dj1005F21.2, GTPBP5 Mitochondrial ribosome-associated GTPase 2, GTP-binding protein 5, Protein obg homolog 1, ObgH1, MTG2, GTPBP5, OBGH1
<b>Format</b>	Liquid. Purified antibody supplied in 1x PBS buffer with 0.09% (w/v) sodium azide and 2% sucrose.
<b>Reconstitution &amp; Storage</b>	Add 50 ul of distilled water. Final anti-GTPBP5 antibody concentration is 1 mg/ml in PBS buffer with 2% sucrose. For longer periods of storage, store at 20°C. Avoid repeat freeze-thaw cycles.
<b>Precautions</b>	GTPBP5 Antibody - N-terminal region is for research use only and not for use in diagnostic or therapeutic procedures.

## Protein Information

---

<b>Name</b>	MTG2
<b>Synonyms</b>	GTPBP5, OBGH1
<b>Function</b>	Plays a role in the regulation of the mitochondrial ribosome assembly and of translational activity. Displays GTPase activity. Involved in the ribosome maturation process.
<b>Cellular Location</b>	Mitochondrion. Mitochondrion inner membrane; Peripheral membrane protein; Matrix side

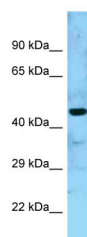
## References

---

Ota T.,et al.Nat. Genet. 36:40-45(2004).  
Deloukas P.,et al.Nature 414:865-871(2001).  
Mural R.J.,et al.Submitted (SEP-2005) to the EMBL/GenBank/DDBJ databases.  
Bechtel S.,et al.BMC Genomics 8:399-399(2007).  
Hirano Y.,et al.Genes Cells 11:1295-1304(2006).

## Images

---



WB Suggested Anti-GTPBP5 Antibody Titration: 1.0 µg/ml  
Positive Control: Fetal Kidney

Please note: All products are 'FOR RESEARCH USE ONLY. NOT FOR USE IN DIAGNOSTIC OR THERAPEUTIC PROCEDURES'.