

# MAGEF1 antibody - C-terminal region

Rabbit Polyclonal Antibody

Catalog # AI14877

## Product Information

---

Application	WB
Primary Accession	<a href="#">Q9HAY2</a>
Other Accession	<a href="#">NM_022149</a> , <a href="#">NP_071432</a>
Reactivity	Human, Rabbit, Pig, Dog, Bovine
Predicted	Dog, Bovine
Host	Rabbit
Clonality	Polyclonal
Calculated MW	35222

## Additional Information

---

Gene ID	64110
Alias Symbol	MGC19617
Other Names	Melanoma-associated antigen F1, MAGE-F1 antigen, MAGEF1
Format	Liquid. Purified antibody supplied in 1x PBS buffer with 0.09% (w/v) sodium azide and 2% sucrose.
Reconstitution & Storage	Add 50 ul of distilled water. Final anti-MAGEF1 antibody concentration is 1 mg/ml in PBS buffer with 2% sucrose. For longer periods of storage, store at 20°C. Avoid repeat freeze-thaw cycles.
Precautions	MAGEF1 antibody - C-terminal region is for research use only and not for use in diagnostic or therapeutic procedures.

## Protein Information

---

Name	MAGEF1 ( <a href="#">HGNC:29639</a> )
Function	Enhances ubiquitin ligase activity of RING-type zinc finger- containing E3 ubiquitin ligases. Proposed to act through recruitment and/or stabilization of the E2 ubiquitin-conjugating enzyme at the E3:substrate complex. MAGEF1-NSMCE1 ubiquitin ligase complex promotes proteasomal degradation of MMS19, a key component of the cytosolic iron-sulfur protein assembly (CIA) machinery. Down-regulation of MMS19 impairs the activity of several DNA repair and metabolism enzymes such as ERCC2/XPD, FANCI, RTEL1 and POLD1 that require iron-sulfur clusters as cofactors. May negatively regulate genome integrity by inhibiting homologous recombination-mediated double-strand break DNA repair (PubMed: <a href="#">29225034</a> ).

## Tissue Location

Ubiquitous..

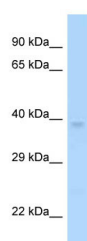
## References

---

Stone B.,et al.Gene 267:173-182(2001).  
Muzny D.M.,et al.Nature 440:1194-1198(2006).  
Chomez P.,et al.Cancer Res. 61:5544-5551(2001).  
Doyle J.M.,et al.Mol. Cell 39:963-974(2010).

## Images

---



WB Suggested Anti-MAGEF1 Antibody Titration: 1.0 µg/ml  
Positive Control: NCI-H226 Whole CellMAGEF1 is supported by BioGPS gene expression data to be expressed in NCIH226

Please note: All products are 'FOR RESEARCH USE ONLY. NOT FOR USE IN DIAGNOSTIC OR THERAPEUTIC PROCEDURES'.