

Nupl1 Antibody - middle region

Rabbit Polyclonal Antibody

Catalog # AI14883

Product Information

Application	WB
Primary Accession	P70581
Other Accession	NM_139091 , NP_620791
Reactivity	Human, Mouse, Rat, Rabbit, Dog, Guinea Pig, Horse, Bovine
Predicted	Human, Mouse, Rat, Rabbit, Pig, Dog, Guinea Pig, Horse, Bovine
Host	Rabbit
Clonality	Polyclonal
Calculated MW	59265

Additional Information

Gene ID	245922
Alias Symbol	p58/p45
Other Names	Nucleoporin p58/p45, Nucleoporin-like protein 1, Nupl1
Format	Liquid. Purified antibody supplied in 1x PBS buffer with 0.09% (w/v) sodium azide and 2% sucrose.
Reconstitution & Storage	Add 50 ul of distilled water. Final anti-Nupl1 antibody concentration is 1 mg/ml in PBS buffer with 2% sucrose. For longer periods of storage, store at 20°C. Avoid repeat freeze-thaw cycles.
Precautions	Nupl1 Antibody - middle region is for research use only and not for use in diagnostic or therapeutic procedures.

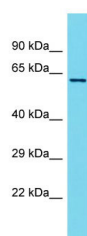
Protein Information

Name	Nup58 {ECO:0000312 RGD:631334}
Synonyms	Nupl1
Function	Component of the nuclear pore complex, a complex required for the trafficking across the nuclear membrane.
Cellular Location	Nucleus, nuclear pore complex. Nucleus membrane; Peripheral membrane protein; Cytoplasmic side. Nucleus membrane; Peripheral membrane protein; Nucleoplasmic side. Note=Biased towards cytoplasmic side Central region of the nuclear pore complex, within the transporter
Tissue Location	Expressed in liver..

References

Hu T.,et al.J. Cell Biol. 134:589-601(1996).
Hu T.,et al.Gene 221:245-253(1998).

Images



Host: Rabbit
Target Name: Nupl1
Sample Tissue: Rat Thymus lysates
Antibody Dilution: 1.0µg/ml

Please note: All products are 'FOR RESEARCH USE ONLY. NOT FOR USE IN DIAGNOSTIC OR THERAPEUTIC PROCEDURES'.