

SEC13 Antibody - C-terminal region

Rabbit Polyclonal Antibody

Catalog # AI14887

Product Information

Application	WB
Primary Accession	P55735
Other Accession	NM_183352 , NP_899195
Reactivity	Human, Mouse, Rat, Rabbit, Zebrafish, Dog, Guinea Pig, Horse, Bovine
Predicted	Human, Mouse, Rat, Rabbit, Zebrafish, Dog, Guinea Pig, Horse, Bovine
Host	Rabbit
Clonality	Polyclonal
Calculated MW	35541

Additional Information

Gene ID	6396
Alias Symbol	D3S1231E, SEC13L1, SEC13R, npp-20
Other Names	Protein SEC13 homolog, SEC13-like protein 1, SEC13-related protein, SEC13, D3S1231E, SEC13L1, SEC13R
Format	Liquid. Purified antibody supplied in 1x PBS buffer with 0.09% (w/v) sodium azide and 2% sucrose.
Reconstitution & Storage	Add 50 μ l of distilled water. Final Anti-SEC13 antibody concentration is 1 mg/ml in PBS buffer with 2% sucrose. For longer periods of storage, store at -20°C. Avoid repeat freeze-thaw cycles.
Precautions	SEC13 Antibody - C-terminal region is for research use only and not for use in diagnostic or therapeutic procedures.

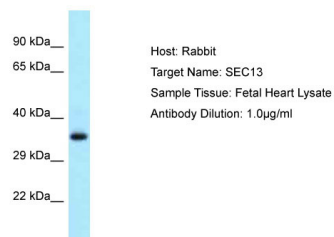
Protein Information

Name	SEC13
Function	Functions as a component of the nuclear pore complex (NPC) and the COPII coat (PubMed: 8972206). At the endoplasmic reticulum, SEC13 is involved in the biogenesis of COPII-coated vesicles (PubMed: 8972206). Required for the exit of adipsin (CFD/ADN), an adipocyte-secreted protein from the endoplasmic reticulum (By similarity).
Cellular Location	Cytoplasmic vesicle, COPII-coated vesicle membrane; Peripheral membrane protein; Cytoplasmic side. Endoplasmic reticulum membrane; Peripheral membrane protein; Cytoplasmic side. Nucleus, nuclear pore complex. Lysosome membrane. Note=In interphase, localizes at both sides of the NPC.

References

Swaroop A.,et al.Hum. Mol. Genet. 3:1281-1286(1994).
Yu W.,et al.Genome Res. 7:353-358(1997).
Ota T.,et al.Nat. Genet. 36:40-45(2004).
Muzny D.M.,et al.Nature 440:1194-1198(2006).
Gevaert K.,et al.Nat. Biotechnol. 21:566-569(2003).

Images



Host: Rabbit
Target Name: SEC13
Sample Tissue: Fetal Heart lysates
Antibody Dilution: 1.0µg/ml

Please note: All products are 'FOR RESEARCH USE ONLY. NOT FOR USE IN DIAGNOSTIC OR THERAPEUTIC PROCEDURES'.