

CD68 antibody - N-terminal region

Rabbit Polyclonal Antibody

Catalog # AI14906

Product Information

Application	WB
Primary Accession	P34810
Other Accession	NM_001251 , NP_001242
Reactivity	Human, Horse, Bovine
Predicted	Human, Horse, Bovine
Host	Rabbit
Clonality	Polyclonal
Calculated MW	37408

Additional Information

Gene ID	968
Alias Symbol Other Names	DKFZp686M18236, GP110, SCARD1, LAMP4 Macrosialin, Gp110, CD68, CD68
Format	Liquid. Purified antibody supplied in 1x PBS buffer with 0.09% (w/v) sodium azide and 2% sucrose.
Reconstitution & Storage	Add 50 ul of distilled water. Final anti-CD68 antibody concentration is 1 mg/ml in PBS buffer with 2% sucrose. For longer periods of storage, store at 20°C. Avoid repeat freeze-thaw cycles.
Precautions	CD68 antibody - N-terminal region is for research use only and not for use in diagnostic or therapeutic procedures.

Protein Information

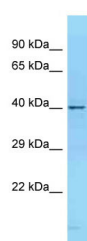
Name	CD68
Function	Could play a role in phagocytic activities of tissue macrophages, both in intracellular lysosomal metabolism and extracellular cell-cell and cell-pathogen interactions. Binds to tissue- and organ-specific lectins or selectins, allowing homing of macrophage subsets to particular sites. Rapid recirculation of CD68 from endosomes and lysosomes to the plasma membrane may allow macrophages to crawl over selectin-bearing substrates or other cells.
Cellular Location	[Isoform Short]: Cell membrane; Single-pass type I membrane protein
Tissue Location	Highly expressed by blood monocytes and tissue macrophages. Also

expressed in lymphocytes, fibroblasts and endothelial cells. Expressed in many tumor cell lines which could allow them to attach to selectins on vascular endothelium, facilitating their dissemination to secondary sites.

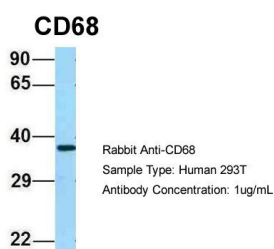
References

Holness C.L.,et al.Blood 81:1607-1613(1993).
Kalnine N.,et al.Submitted (JUL-2003) to the EMBL/GenBank/DDBJ databases.
Ota T.,et al.Nat. Genet. 36:40-45(2004).
Suzuki Y.,et al.Submitted (APR-2005) to the EMBL/GenBank/DDBJ databases.
Zody M.C.,et al.Nature 440:1045-1049(2006).

Images



WB Suggested Anti-CD68 Antibody Titration: 1.0 µg/ml
Positive Control: NCI-H226 Whole Cell



Host:Rabbit
Target Name:CD68
Sample Tissue:Human 293T
Antibody Dilution: 1.0µg/ml

Please note: All products are 'FOR RESEARCH USE ONLY. NOT FOR USE IN DIAGNOSTIC OR THERAPEUTIC PROCEDURES'.