

CD1A antibody - C-terminal region

Rabbit Polyclonal Antibody

Catalog # AI14912

Product Information

Application	WB
Primary Accession	P06126
Other Accession	NM_001763 , NP_001754
Reactivity	Human, Mouse, Rat, Pig, Dog, Guinea Pig, Horse, Bovine, Sheep
Predicted	Human, Pig, Dog, Horse, Bovine
Host	Rabbit
Clonality	Polyclonal
Calculated MW	37077

Additional Information

Gene ID	909
Alias Symbol	CD1, FCB6, HTA1, R4, T6
Other Names	T-cell surface glycoprotein CD1a, T-cell surface antigen T6/Leu-6, hTa1 thymocyte antigen, CD1a, CD1A
Format	Liquid. Purified antibody supplied in 1x PBS buffer with 0.09% (w/v) sodium azide and 2% sucrose.
Reconstitution & Storage	Add 50 ul of distilled water. Final anti-CD1A antibody concentration is 1 mg/ml in PBS buffer with 2% sucrose. For longer periods of storage, store at 20°C. Avoid repeat freeze-thaw cycles.
Precautions	CD1A antibody - C-terminal region is for research use only and not for use in diagnostic or therapeutic procedures.

Protein Information

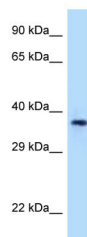
Name	CD1A
Function	Antigen-presenting protein that binds self and non-self lipid and glycolipid antigens and presents them to T-cell receptors on natural killer T-cells.
Cellular Location	Cell membrane; Single-pass type I membrane protein. Membrane raft; Single-pass type I membrane protein. Endosome membrane; Single-pass type I membrane protein. Note=Subject to intracellular trafficking between the cell membrane and endosomes (PubMed:11231314). Localizes to cell surface lipid rafts (PubMed:18178838).
Tissue Location	Expressed on cortical thymocytes, epidermal Langerhans cells, dendritic cells,

on certain T-cell leukemias, and in various other tissues.

References

Aruffo A.,et al.J. Immunol. 143:1723-1730(1989).
Martin L.H.,et al.Proc. Natl. Acad. Sci. U.S.A. 84:9189-9193(1987).
Ota T.,et al.Nat. Genet. 36:40-45(2004).
Gregory S.G.,et al.Nature 441:315-321(2006).
Mural R.J.,et al.Submitted (SEP-2005) to the EMBL/GenBank/DDBJ databases.

Images



WB Suggested Anti-CD1A Antibody Titration: 1.0 µg/ml
Positive Control: 721_B Whole Cell

Please note: All products are 'FOR RESEARCH USE ONLY. NOT FOR USE IN DIAGNOSTIC OR THERAPEUTIC PROCEDURES'.