

# Angpt1 antibody - C-terminal region

Rabbit Polyclonal Antibody

Catalog # AI14919

## Product Information

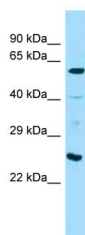
<b>Application</b>	WB
<b>Primary Accession</b>	<a href="#">Q8C2K6</a>
<b>Other Accession</b>	<a href="#">NM_009640</a> , <a href="#">NP_033770</a>
<b>Reactivity</b>	Human, Mouse, Rat, Rabbit, Pig, Dog, Guinea Pig, Horse, Bovine, Sheep
<b>Predicted</b>	Human, Mouse, Rat, Rabbit, Pig, Chicken, Guinea Pig, Horse
<b>Host</b>	Rabbit
<b>Clonality</b>	Polyclonal
<b>Calculated MW</b>	57 kDa

## Additional Information

<b>Alias Symbol</b>	1110046O21Rik, Ang-1, Ang1
<b>Format</b>	Liquid. Purified antibody supplied in 1x PBS buffer with 0.09% (w/v) sodium azide and 2% sucrose.
<b>Reconstitution &amp; Storage</b>	Add 50 ul of distilled water. Final anti-Angpt1 antibody concentration is 1 mg/ml in PBS buffer with 2% sucrose. For longer periods of storage, store at 20°C. Avoid repeat freeze-thaw cycles.
<b>Precautions</b>	Angpt1 antibody - C-terminal region is for research use only and not for use in diagnostic or therapeutic procedures.

## Protein Information

## Images



WB Suggested Anti-Angpt1 Antibody Titration: 1.0 µg/ml  
Positive Control: Mouse Liver