

AADACL3 antibody - C-terminal region

Rabbit Polyclonal Antibody

Catalog # AI14923

Product Information

Application	WB
Primary Accession	Q5VUY0
Other Accession	NM_001103170 , NP_001096640
Reactivity	Human
Predicted	Human
Host	Rabbit
Clonality	Polyclonal
Calculated MW	46155

Additional Information

Gene ID	126767
Alias Symbol	RP11-474O21.3
Other Names	Arylacetamide deacetylase-like 3, 3.1.1.-, AADACL3
Format	Liquid. Purified antibody supplied in 1x PBS buffer with 0.09% (w/v) sodium azide and 2% sucrose.
Reconstitution & Storage	Add 50 ul of distilled water. Final anti-AADACL3 antibody concentration is 1 mg/ml in PBS buffer with 2% sucrose. For longer periods of storage, store at 20°C. Avoid repeat freeze-thaw cycles.
Precautions	AADACL3 antibody - C-terminal region is for research use only and not for use in diagnostic or therapeutic procedures.

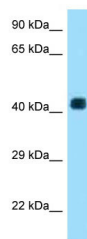
Protein Information

Name	AADACL3
-------------	---------

References

Ota T.,et al.Nat. Genet. 36:40-45(2004).
Gregory S.G.,et al.Nature 441:315-321(2006).

Images



WB Suggested Anti-AADACL3 Antibody Titration: 1.0
 $\mu\text{g/ml}$
Positive Control: Hela Whole Cell

Please note: All products are 'FOR RESEARCH USE ONLY. NOT FOR USE IN DIAGNOSTIC OR THERAPEUTIC PROCEDURES'.