

C16orf70 antibody - C-terminal region

Rabbit Polyclonal Antibody

Catalog # AI14927

Product Information

Application	WB
Primary Accession	Q9BSU1
Other Accession	NM_025187 , NP_079463
Reactivity	Human, Mouse, Rat, Rabbit, Zebrafish, Dog, Guinea Pig, Horse, Bovine
Predicted	Dog, Guinea Pig
Host	Rabbit
Clonality	Polyclonal
Calculated MW	47524

Additional Information

Gene ID	80262
Alias Symbol	C16orf6, FLJ12076, LIN10, lin-10
Other Names	UPF0183 protein C16orf70, C16orf70, C16orf6
Format	Liquid. Purified antibody supplied in 1x PBS buffer with 0.09% (w/v) sodium azide and 2% sucrose.
Reconstitution & Storage	Add 50 ul of distilled water. Final anti-C16orf70 antibody concentration is 1 mg/ml in PBS buffer with 2% sucrose. For longer periods of storage, store at 20°C. Avoid repeat freeze-thaw cycles.
Precautions	C16orf70 antibody - C-terminal region is for research use only and not for use in diagnostic or therapeutic procedures.

Protein Information

Name	PHAF1 (HGNC:29564)
Synonyms	C16orf6, C16orf70
Function	Plays a regulatory role in autophagic activity. In complex with BCAS3, associates with the autophagosome formation site during both non-selective and selective autophagy.
Cellular Location	Cytoplasm. Preautophagosomal structure. Note=The BCAS3:PHAF1 complex is recruited to the preautophagosomal structures adjacent to the damaged mitochondria upon mitophagy in a PRKN-PINK1 dependent manner.

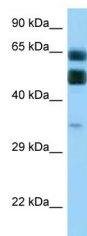
References

Lee Y.M.,et al.Submitted (AUG-1999) to the EMBL/GenBank/DDBJ databases.

Ota T.,et al.Nat. Genet. 36:40-45(2004).

Van Damme P.,et al.Proc. Natl. Acad. Sci. U.S.A. 109:12449-12454(2012).

Images



WB Suggested Anti-C16orf70 Antibody Titration: 1.0 µg/ml
Positive Control: Placenta

Please note: All products are 'FOR RESEARCH USE ONLY. NOT FOR USE IN DIAGNOSTIC OR THERAPEUTIC PROCEDURES'.