

SDC3 Antibody - C-terminal region

Rabbit Polyclonal Antibody

Catalog # AI14940

Product Information

Application	WB
Primary Accession	O75056
Other Accession	NM_014654 , NP_055469
Reactivity	Human, Mouse, Rat, Rabbit, Zebrafish, Pig, Dog, Guinea Pig, Horse, Bovine
Predicted	Human, Mouse, Rat, Rabbit, Zebrafish, Pig, Dog, Guinea Pig, Horse, Bovine
Host	Rabbit
Clonality	Polyclonal
Calculated MW	45497

Additional Information

Gene ID	9672
Alias Symbol	SDCN, SYND3
Other Names	Syndecan-3, SYND3, SDC3, KIAA0468
Format	Liquid. Purified antibody supplied in 1x PBS buffer with 0.09% (w/v) sodium azide and 2% sucrose.
Reconstitution & Storage	Add 50 ul of distilled water. Final anti-SDC3 antibody concentration is 1 mg/ml in PBS buffer with 2% sucrose. For longer periods of storage, store at 20°C. Avoid repeat freeze-thaw cycles.
Precautions	SDC3 Antibody - C-terminal region is for research use only and not for use in diagnostic or therapeutic procedures.

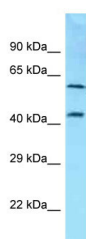
Protein Information

Name	SDC3
Synonyms	KIAA0468
Function	Cell surface proteoglycan that may bear heparan sulfate (By similarity). May have a role in the organization of cell shape by affecting the actin cytoskeleton, possibly by transferring signals from the cell surface in a sugar-dependent mechanism.
Cellular Location	Cell membrane; Single-pass type I membrane protein
Tissue Location	Expressed in the nervous system, the adrenal gland, and the spleen.

References

Berndt C.,et al.J. Cell. Biochem. 82:246-259(2001).
Seki N.,et al.DNA Res. 4:345-349(1997).
Gregory S.G.,et al.Nature 441:315-321(2006).
Asundi V.K.,et al.Biochem. Biophys. Res. Commun. 240:502-506(1997).
Liu X.,et al.Structure 21:342-354(2013).

Images



Host: Rabbit
Target Name: SDC3
Sample Tissue: NCI-H226 Whole cell lysate
S
Antibody Dilution: 1.0µg/ml

Please note: All products are 'FOR RESEARCH USE ONLY. NOT FOR USE IN DIAGNOSTIC OR THERAPEUTIC PROCEDURES'.