

# CD6 antibody - C-terminal region

Rabbit Polyclonal Antibody

Catalog # AI14946

## Product Information

---

<b>Application</b>	WB
<b>Primary Accession</b>	<a href="#">P30203</a>
<b>Other Accession</b>	<a href="#">NM_006725</a> , <a href="#">NP_006716</a>
<b>Reactivity</b>	Human, Rat, Rabbit, Dog, Bovine
<b>Predicted</b>	Human, Rabbit, Dog, Bovine
<b>Host</b>	Rabbit
<b>Clonality</b>	Polyclonal
<b>Calculated MW</b>	71801

## Additional Information

---

<b>Gene ID</b>	923
<b>Alias Symbol</b>	FLJ44171, TP120
<b>Other Names</b>	T-cell differentiation antigen CD6, T12, TP120, CD6, CD6
<b>Format</b>	Liquid. Purified antibody supplied in 1x PBS buffer with 0.09% (w/v) sodium azide and 2% sucrose.
<b>Reconstitution &amp; Storage</b>	Add 50 ul of distilled water. Final anti-CD6 antibody concentration is 1 mg/ml in PBS buffer with 2% sucrose. For longer periods of storage, store at 20°C. Avoid repeat freeze-thaw cycles.
<b>Precautions</b>	CD6 antibody - C-terminal region is for research use only and not for use in diagnostic or therapeutic procedures.

## Protein Information

---

<b>Name</b>	CD6 ( <a href="#">HGNC:1691</a> )
<b>Function</b>	Cell adhesion molecule that mediates cell-cell contacts and regulates T-cell responses via its interaction with ALCAM/CD166 (PubMed: <a href="#">15048703</a> , PubMed: <a href="#">15294938</a> , PubMed: <a href="#">16352806</a> , PubMed: <a href="#">16914752</a> , PubMed: <a href="#">24584089</a> , PubMed: <a href="#">24945728</a> ). Contributes to signaling cascades triggered by activation of the TCR/CD3 complex (PubMed: <a href="#">24584089</a> ). Functions as a costimulatory molecule; promotes T-cell activation and proliferation (PubMed: <a href="#">15294938</a> , PubMed: <a href="#">16352806</a> , PubMed: <a href="#">16914752</a> ). Contributes to the formation and maturation of the immunological synapse (PubMed: <a href="#">15294938</a> , PubMed: <a href="#">16352806</a> ). Functions as a calcium- dependent pattern receptor that binds and aggregates both Gram-positive and Gram-negative bacteria. Binds both lipopolysaccharide (LPS) from

Gram-negative bacteria and lipoteichoic acid from Gram-positive bacteria (PubMed:[17601777](#)). LPS binding leads to the activation of signaling cascades and down-stream MAP kinases (PubMed:[17601777](#)). Mediates activation of the inflammatory response and the secretion of pro-inflammatory cytokines in response to LPS (PubMed:[17601777](#)).

#### Cellular Location

Cell membrane; Single-pass type I membrane protein. Note=Detected at the immunological synapse, i.e, at the contact zone between antigen-presenting dendritic cells and T-cells (PubMed:15294938, PubMed:16352806). Colocalizes with the TCR/CD3 complex at the immunological synapse (PubMed:15294938)

#### Tissue Location

Detected on thymocytes (PubMed:15294938). Detected on peripheral blood T-cells (PubMed:15048703, PubMed:16352806) Detected on natural killer (NK) cells (PubMed:16352806). Soluble CD6 is detected in blood serum (at protein level) (PubMed:17601777). Detected in spleen, thymus, appendix, lymph node and peripheral blood leukocytes (PubMed:9013954). Expressed by thymocytes, mature T-cells, a subset of B-cells known as B-1 cells, and by some cells in the brain

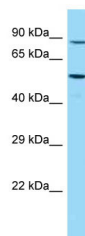
## References

---

Bowen M.A.,et al.J. Immunol. 158:1149-1156(1997).  
Taylor T.D.,et al.Nature 440:497-500(2006).  
Aruffo A.,et al.J. Exp. Med. 174:949-952(1991).  
Castro M.A.,et al.J. Immunol. 178:4351-4361(2007).  
Swack J.A.,et al.J. Biol. Chem. 266:7137-7143(1991).

## Images

---



WB Suggested Anti-CD6 Antibody Titration: 1.0 µg/ml  
Positive Control: HCT15 Whole Cell

Please note: All products are 'FOR RESEARCH USE ONLY. NOT FOR USE IN DIAGNOSTIC OR THERAPEUTIC PROCEDURES'.