

# TAZ Antibody - C-terminal region

Rabbit Polyclonal Antibody

Catalog # AI14952

## Product Information

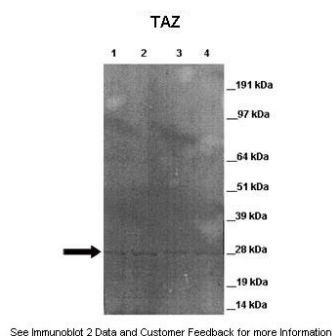
<b>Application</b>	WB
<b>Primary Accession</b>	<a href="#">Q16635-7</a>
<b>Other Accession</b>	<a href="#">NM_181311</a> , <a href="#">NP_851828</a>
<b>Reactivity</b>	Human, Mouse, Rat, Rabbit, Dog, Guinea Pig, Horse, Bovine
<b>Predicted</b>	Human, Mouse, Rat, Rabbit, Pig, Dog, Guinea Pig, Horse, Bovine
<b>Host</b>	Rabbit
<b>Clonality</b>	Polyclonal
<b>Calculated MW</b>	28 kDa

## Additional Information

<b>Alias Symbol</b>	BTHS, CMD3A, EFE, EFE2, FLJ27390, G4.5, LVNCX, Taz1, XAP-2
<b>Format</b>	Liquid. Purified antibody supplied in 1x PBS buffer with 0.09% (w/v) sodium azide and 2% sucrose.
<b>Reconstitution &amp; Storage</b>	Add 50 ul of distilled water. Final anti-TAZ antibody concentration is 1 mg/ml in PBS buffer with 2% sucrose. For longer periods of storage, store at 20°C. Avoid repeat freeze-thaw cycles.
<b>Precautions</b>	TAZ Antibody - C-terminal region is for research use only and not for use in diagnostic or therapeutic procedures.

## Protein Information

## Images



Lanes: Lane 1: 20ug mouse cardiac mitochondria lysate  
Lane 2: 20ug mouse cardiac mitochondria lysate Lane 3:  
20ug mouse cardiac mitochondria lysate Lane 4: 20ug  
mouse cardiac mitochondria lysate  
Primary Antibody Dilution: 1:500  
Secondary Antibody: Goat anti-rabbit-HRP  
Secondary Antibody Dilution: 1:2500  
Gene Name: TAZ An  
Submitted by: Corey Powers, Cincinnati Children's Hospital  
Medical Center