

# IL13RA1 Antibody - N-terminal region

Rabbit Polyclonal Antibody

Catalog # AI14955

## Product Information

---

<b>Application</b>	WB
<b>Primary Accession</b>	<a href="#">P78552</a>
<b>Other Accession</b>	<a href="#">NM_001560</a> , <a href="#">NP_001551</a>
<b>Reactivity</b>	Human, Mouse, Rat, Rabbit, Pig, Dog, Guinea Pig, Horse, Bovine, Sheep
<b>Predicted</b>	Human, Mouse, Rat, Rabbit, Pig, Dog, Guinea Pig, Horse, Bovine, Sheep
<b>Host</b>	Rabbit
<b>Clonality</b>	Polyclonal
<b>Calculated MW</b>	48760

## Additional Information

---

<b>Gene ID</b>	3597
<b>Alias Symbol</b>	CD213A1, IL-13Ra, NR4
<b>Other Names</b>	Interleukin-13 receptor subunit alpha-1, IL-13 receptor subunit alpha-1, IL-13R subunit alpha-1, IL-13R-alpha-1, IL-13RA1, Cancer/testis antigen 19, CT19, CD213a1, IL13RA1, IL13R, IL13RA
<b>Format</b>	Liquid. Purified antibody supplied in 1x PBS buffer with 0.09% (w/v) sodium azide and 2% sucrose.
<b>Reconstitution &amp; Storage</b>	Add 50 ul of distilled water. Final anti-IL13RA1 antibody concentration is 1 mg/ml in PBS buffer with 2% sucrose. For longer periods of storage, store at 20°C. Avoid repeat freeze-thaw cycles.
<b>Precautions</b>	IL13RA1 Antibody - N-terminal region is for research use only and not for use in diagnostic or therapeutic procedures.

## Protein Information

---

<b>Name</b>	IL13RA1
<b>Synonyms</b>	IL13R, IL13RA
<b>Function</b>	Binds with low affinity to interleukin-13 (IL13). Together with IL4RA can form a functional receptor for IL13. Also serves as an alternate accessory protein to the common cytokine receptor gamma chain for interleukin-4 (IL4) signaling, but cannot replace the function of IL2RG in allowing enhanced interleukin-2 (IL2) binding activity.
<b>Cellular Location</b>	Membrane; Single-pass type I membrane protein.

## Tissue Location

Ubiquitous. Highest levels in heart, liver, skeletal muscle and ovary; lowest levels in brain, lung and kidney Also found in B-cells, T-cells and endothelial cells

## References

---

Miloux B.,et al.FEBS Lett. 401:163-166(1997).

Gauchat J.-F.,et al.Submitted (JAN-1997) to the EMBL/GenBank/DDBJ databases.

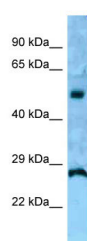
Aman M.J.,et al.J. Biol. Chem. 271:29265-29270(1996).

Wada M.,et al.Submitted (SEP-1999) to the EMBL/GenBank/DDBJ databases.

Ota T.,et al.Nat. Genet. 36:40-45(2004).

## Images

---



WB Suggested Anti-IL13RA1 Antibody Titration: 1.0 µg/ml  
Positive Control: Fetal kidney

Please note: All products are 'FOR RESEARCH USE ONLY. NOT FOR USE IN DIAGNOSTIC OR THERAPEUTIC PROCEDURES'.