

BROX Antibody - C-terminal region

Rabbit Polyclonal Antibody

Catalog # AI14956

Product Information

Application	WB
Primary Accession	Q5VW32
Other Accession	NP_653296
Reactivity	Human
Host	Rabbit
Clonality	Polyclonal
Calculated MW	46476

Additional Information

Gene ID	148362
Alias Symbol Other Names	BROX, BROFTI, C1orf58, BRO1 domain-containing protein BROX, BRO1 domain- and CAAX motif-containing protein, BROX, BROFTI, C1orf58
Format	Liquid. Purified antibody supplied in 1x PBS buffer with 0.09% (w/v) sodium azide and 2% sucrose.
Reconstitution & Storage	Add 50 μ l of distilled water. Final Anti-BROX antibody concentration is 1 mg/ml in PBS buffer with 2% sucrose. For longer periods of storage, store at -20°C. Avoid repeat freeze-thaw cycles.
Precautions	BROX Antibody - C-terminal region is for research use only and not for use in diagnostic or therapeutic procedures.

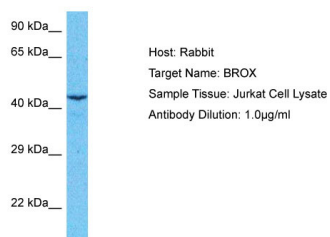
Protein Information

Name	BROX (HGNC:26512)
Synonyms	BROFTI, C1orf58
Function	Nuclear envelope-associated factor that is involved in the nuclear envelope ruptures during interphase (NERDI) repair, where it is locally recruited by CHMP5 and reduces cytoskeletal stress through its action on SYN2 to help reseal the ruptured membrane.
Cellular Location	Nucleus membrane; Lipid-anchor. Note=During nuclear envelope repair, localizes at rupture sites where it is recruited by the CHMP7/ESCRT-III axis.

References

Ichioka F.,et al.FEBS J. 275:682-692(2008).
Ota T.,et al.Nat. Genet. 36:40-45(2004).
Gregory S.G.,et al.Nature 441:315-321(2006).
Mural R.J.,et al.Submitted (SEP-2005) to the EMBL/GenBank/DDBJ databases.
Maurer-Stroh S.,et al.PLoS Comput. Biol. 3:634-648(2007).

Images



Host: Rabbit
Target Name: BROX
Sample Tissue: Jurkat Whole Cell lysates
Antibody Dilution: 1.0µg/ml

Please note: All products are 'FOR RESEARCH USE ONLY. NOT FOR USE IN DIAGNOSTIC OR THERAPEUTIC PROCEDURES'.