

# Rap1a Antibody - C-terminal region

Rabbit Polyclonal Antibody

Catalog # AI14958

## Product Information

---

<b>Application</b>	WB
<b>Primary Accession</b>	<a href="#">P62835</a>
<b>Other Accession</b>	<a href="#">NM_145541</a> , <a href="#">NP_663516</a>
<b>Reactivity</b>	Human, Mouse, Rat, Rabbit, Zebrafish, Pig, Goat, Dog, Guinea Pig, Horse, Bovine
<b>Predicted</b>	Human, Mouse, Rat, Rabbit, Zebrafish, Pig, Goat, Dog, Guinea Pig, Horse, Bovine
<b>Host</b>	Rabbit
<b>Clonality</b>	Polyclonal
<b>Calculated MW</b>	20987

## Additional Information

---

<b>Gene ID</b>	109905
<b>Alias Symbol</b>	AI848598, G-22K, Krev-1, Rap1
<b>Other Names</b>	Ras-related protein Rap-1A, Ras-related protein Krev-1, Rap1a, Krev-1
<b>Format</b>	Liquid. Purified antibody supplied in 1x PBS buffer with 0.09% (w/v) sodium azide and 2% sucrose.
<b>Reconstitution &amp; Storage</b>	Add 50 ul of distilled water. Final anti-Rap1a antibody concentration is 1 mg/ml in PBS buffer with 2% sucrose. For longer periods of storage, store at 20°C. Avoid repeat freeze-thaw cycles.
<b>Precautions</b>	Rap1a Antibody - C-terminal region is for research use only and not for use in diagnostic or therapeutic procedures.

## Protein Information

---

<b>Name</b>	Rap1a
<b>Synonyms</b>	Krev-1
<b>Function</b>	Counteracts the mitogenic function of Ras, at least partly because it can interact with Ras GAPs and RAF in a competitive manner. Together with ITGB1BP1, regulates KRIT1 localization to microtubules and membranes (By similarity). Plays a role in nerve growth factor (NGF)-induced neurite outgrowth. Plays a role in the regulation of embryonic blood vessel formation. Involved in the establishment of basal endothelial barrier function. Facilitates the progressive accumulation of CDH1 at mature desmosome junctions via cAMP-dependent signaling and its interaction with PKP3 (By similarity). May

be involved in the regulation of the vascular endothelial growth factor receptor KDR expression at endothelial cell-cell junctions.

**Cellular Location**

Cell membrane; Lipid-anchor. Cell junction. Cytoplasm. Cytoplasm, perinuclear region. Early endosome. Late endosome. Note=Recruited from early endosome to late endosome compartment after nerve growth factor (NGF) stimulation. Colocalized with RAPGEF2 in the perinuclear region (By similarity). Localized with RAPGEF2 at cell-cell junctions

**Tissue Location**

Expressed in the testis and sperm midpiece (at protein level).

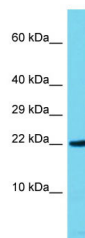
**References**

---

Kanemura H.,et al.Biochem. Biophys. Res. Commun. 387:754-759(2009).

**Images**

---



Host: Rabbit

Target Name: Rap1a

Sample Tissue: Mouse Testis lysates

Antibody Dilution: 1.0µg/ml

Please note: All products are 'FOR RESEARCH USE ONLY. NOT FOR USE IN DIAGNOSTIC OR THERAPEUTIC PROCEDURES'.