

PTGER1 Antibody - C-terminal region

Rabbit Polyclonal Antibody

Catalog # AI14962

Product Information

| | |
|--------------------------|---------------------------|
| Application | WB |
| Primary Accession | P34995 |
| Other Accession | NP_000946 |
| Reactivity | Human |
| Host | Rabbit |
| Clonality | Polyclonal |
| Calculated MW | 41801 |

Additional Information

| | |
|---|---|
| Gene ID | 5731 |
| Alias Symbol Other Names | PTGER1, Prostaglandin E2 receptor EP1 subtype, PGE receptor EP1 subtype, PGE2 receptor EP1 subtype, Prostanoid EP1 receptor, PTGER1 |
| Format | Liquid. Purified antibody supplied in 1x PBS buffer with 0.09% (w/v) sodium azide and 2% sucrose. |
| Reconstitution & Storage | Add 50 μ l of distilled water. Final Anti-PTGER1 antibody concentration is 1 mg/ml in PBS buffer with 2% sucrose. For longer periods of storage, store at -20°C. Avoid repeat freeze-thaw cycles. |
| Precautions | PTGER1 Antibody - C-terminal region is for research use only and not for use in diagnostic or therapeutic procedures. |

Protein Information

| | |
|--------------------------|--|
| Name | PTGER1 |
| Function | Receptor for prostaglandin E2 (PGE2). The activity of this receptor is mediated by G(q) proteins which activate a phosphatidylinositol-calcium second messenger system. May play a role as an important modulator of renal function. Implicated the smooth muscle contractile response to PGE2 in various tissues. |
| Cellular Location | Cell membrane; Multi-pass membrane protein. |
| Tissue Location | Abundant in kidney. Lower level expression in lung, skeletal muscle and spleen, lowest expression in testis and not detected in liver brain and heart |

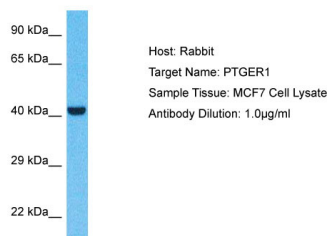
References

Funk C.D.,et al.J. Biol. Chem. 268:26767-26772(1993).

Suwa M.,et al.Submitted (JUL-2001) to the EMBL/GenBank/DDBJ databases.

Warren C.N.,et al.Submitted (APR-2003) to the EMBL/GenBank/DDBJ databases.

Images



Host: Rabbit

Target Name: PTGER1

Sample Tissue: MCF7 Whole Cell lysates

Antibody Dilution: 1.0µg/ml

Please note: All products are 'FOR RESEARCH USE ONLY. NOT FOR USE IN DIAGNOSTIC OR THERAPEUTIC PROCEDURES'.