

MCAM Antibody - C-terminal region

Rabbit Polyclonal Antibody

Catalog # AI14968

Product Information

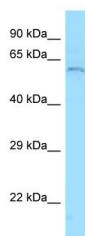
Application	WB
Primary Accession	P43121-2
Reactivity	Human, Mouse, Rat, Rabbit, Pig, Dog, Guinea Pig, Horse
Predicted	Human, Mouse, Rat, Rabbit, Pig, Horse
Host	Rabbit
Clonality	Polyclonal
Calculated MW	57 kDa

Additional Information

Format	Liquid. Purified antibody supplied in 1x PBS buffer with 0.09% (w/v) sodium azide and 2% sucrose.
Reconstitution & Storage	Add 50 ul of distilled water. Final anti-MCAM antibody concentration is 1 mg/ml in PBS buffer with 2% sucrose. For longer periods of storage, store at 20°C. Avoid repeat freeze-thaw cycles.
Precautions	MCAM Antibody - C-terminal region is for research use only and not for use in diagnostic or therapeutic procedures.

Protein Information

Images



Host: Rabbit
Target Name: MCAM
Sample Tissue: HepG2 Whole cell lysate
S
Antibody Dilution: 1.0µg/ml
There is BioGPS gene expression data showing that MCAM is expressed in HepG2

Please note: All products are 'FOR RESEARCH USE ONLY. NOT FOR USE IN DIAGNOSTIC OR THERAPEUTIC PROCEDURES'.