

CD207 antibody - C-terminal region

Rabbit Polyclonal Antibody

Catalog # AI14970

Product Information

Application	WB
Primary Accession	Q9UJ71
Other Accession	NM_015717 , NP_056532
Reactivity	Human, Mouse, Rat, Rabbit, Zebrafish, Pig, Guinea Pig, Horse, Bovine
Predicted	Mouse, Rat, Pig, Guinea Pig, Horse, Bovine
Host	Rabbit
Clonality	Polyclonal
Calculated MW	36725

Additional Information

Gene ID	50489
Alias Symbol	CLEC4K
Other Names	C-type lectin domain family 4 member K, Langerin, CD207, CD207, CLEC4K
Format	Liquid. Purified antibody supplied in 1x PBS buffer with 0.09% (w/v) sodium azide and 2% sucrose.
Reconstitution & Storage	Add 50 ul of distilled water. Final anti-CD207 antibody concentration is 1 mg/ml in PBS buffer with 2% sucrose. For longer periods of storage, store at 20°C. Avoid repeat freeze-thaw cycles.
Precautions	CD207 antibody - C-terminal region is for research use only and not for use in diagnostic or therapeutic procedures.

Protein Information

Name	CD207
Synonyms	CLEC4K
Function	Calcium-dependent lectin displaying mannose-binding specificity. Induces the formation of Birbeck granules (BGs); is a potent regulator of membrane superimposition and zippering. Binds to sulfated as well as mannosylated glycans, keratan sulfate (KS) and beta-glucans. Facilitates uptake of antigens and is involved in the routing and/or processing of antigen for presentation to T cells. Major receptor on primary Langerhans cells for Candida species, Saccharomyces species, and Malassezia furfur. Protects against human immunodeficiency virus-1 (HIV-1) infection. Binds to high-mannose structures present on the envelope glycoprotein which is followed by subsequent

targeting of the virus to the Birbeck granules leading to its rapid degradation.

Cellular Location

Membrane; Single- pass type II membrane protein. Note=Found in Birbeck granules (BGs), which are organelles consisting of superimposed and zippered membranes

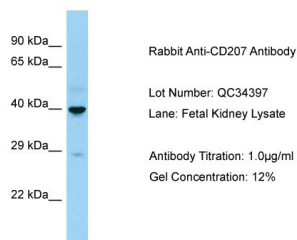
Tissue Location

Exclusively expressed by Langerhans cells. Expressed in astrocytoma and malignant ependymoma, but not in normal brain tissues.

References

Valladeau J.,et al.Immunity 12:71-81(2000).
Hillier L.W.,et al.Nature 434:724-731(2005).
Stambach N.S.,et al.Glycobiology 13:401-410(2003).
Valladeau J.,et al.Immunol. Res. 28:93-107(2003).
de Witte L.,et al.Nat. Med. 13:367-371(2007).

Images



Host: Rabbit
Target Name: CD207
Sample Tissue: Fetal Kidney
Antibody Dilution: 1.0µg/ml

Please note: All products are 'FOR RESEARCH USE ONLY. NOT FOR USE IN DIAGNOSTIC OR THERAPEUTIC PROCEDURES'.