

Abi3 Antibody - C-terminal region

Rabbit Polyclonal Antibody

Catalog # AI14971

Product Information

Application	WB
Primary Accession	Q8BYZ1
Other Accession	NM_025659 , NP_079935
Reactivity	Human, Mouse, Rat, Rabbit, Pig, Dog, Horse, Bovine
Predicted	Human, Mouse, Rat, Rabbit, Pig, Dog, Horse, Bovine
Host	Rabbit
Clonality	Polyclonal
Calculated MW	39107

Additional Information

Gene ID	66610
Alias Symbol	2210414K06Rik, AI987680, NESH
Other Names	ABI gene family member 3, New molecule including SH3, Nesh, Abi3, Nesh
Format	Liquid. Purified antibody supplied in 1x PBS buffer with 0.09% (w/v) sodium azide and 2% sucrose.
Reconstitution & Storage	Add 50 ul of distilled water. Final anti-Abi3 antibody concentration is 1 mg/ml in PBS buffer with 2% sucrose. For longer periods of storage, store at 20°C. Avoid repeat freeze-thaw cycles.
Precautions	Abi3 Antibody - C-terminal region is for research use only and not for use in diagnostic or therapeutic procedures.

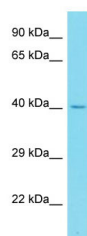
Protein Information

Name	Abi3
Synonyms	Nesh
Function	Inhibits ectopic tumor cell metastasis of SRD cells. In vitro, reduces cell motility.
Cellular Location	Cytoplasm.

References

Carninci P.,et al.Science 309:1559-1563(2005).
Church D.M.,et al.PLoS Biol. 7:E1000112-E1000112(2009).
Mural R.J.,et al.Submitted (JUL-2005) to the EMBL/GenBank/DDBJ databases.
Ichigotani Y.,et al.Cancer Res. 62:2215-2219(2002).

Images



Host: Rabbit
Target Name: Abi3
Sample Tissue: Mouse Heart lysates
Antibody Dilution: 1.0µg/ml

Please note: All products are 'FOR RESEARCH USE ONLY. NOT FOR USE IN DIAGNOSTIC OR THERAPEUTIC PROCEDURES'.