

FCGR2B antibody - C-terminal region

Rabbit Polyclonal Antibody

Catalog # AI14975

Product Information

Application	WB
Primary Accession	P31994
Other Accession	NM_001002273 , NP_001002273
Reactivity	Human
Predicted	Human
Host	Rabbit
Clonality	Polyclonal
Calculated MW	34044

Additional Information

Gene ID	2213
Alias Symbol	CD32, CD32B, FCG2, FCGR2, IGFR2
Other Names	Low affinity immunoglobulin gamma Fc region receptor II-b, IgG Fc receptor II-b, CDw32, Fc-gamma RII-b, Fc-gamma-RIIb, FcRII-b, CD32, FCGR2B, CD32, FCG2, IGFR2
Format	Liquid. Purified antibody supplied in 1x PBS buffer with 0.09% (w/v) sodium azide and 2% sucrose.
Reconstitution & Storage	Add 50 ul of distilled water. Final anti-FCGR2B antibody concentration is 1 mg/ml in PBS buffer with 2% sucrose. For longer periods of storage, store at 20°C. Avoid repeat freeze-thaw cycles.
Precautions	FCGR2B antibody - C-terminal region is for research use only and not for use in diagnostic or therapeutic procedures.

Protein Information

Name	FCGR2B
Synonyms	CD32, FCG2, IGFR2
Function	Receptor for the Fc region of complexed or aggregated immunoglobulins gamma. Low affinity receptor. Involved in a variety of effector and regulatory functions such as phagocytosis of immune complexes and modulation of antibody production by B-cells. Binding to this receptor results in down-modulation of previous state of cell activation triggered via antigen receptors on B-cells (BCR), T-cells (TCR) or via another Fc receptor. Isoform IIB1 fails to mediate endocytosis or phagocytosis. Isoform IIB2 does not

trigger phagocytosis.

Cellular Location

Cell membrane; Single-pass type I membrane protein

Tissue Location

Is the most broadly distributed Fc-gamma-receptor. Expressed in monocyte, neutrophils, macrophages, basophils, eosinophils, Langerhans cells, B-cells, platelets cells and placenta (endothelial cells). Not detected in natural killer cells

References

Ng S.,et al.Submitted (JAN-1997) to the EMBL/GenBank/DDBJ databases.

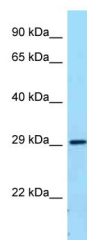
Stuart S.G.,et al.EMBO J. 8:3657-3666(1989).

Brooks D.G.,et al.J. Exp. Med. 170:1369-1385(1989).

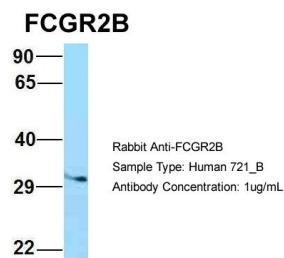
Engelhardt W.,et al.Eur. J. Immunol. 20:1367-1377(1990).

Ebert L.,et al.Submitted (MAY-2004) to the EMBL/GenBank/DDBJ databases.

Images



WB Suggested Anti-FCGR2B Antibody Titration: 1.0 µg/ml
Positive Control: Fetal Lung



Host:Rabbit
Target Name:FCGR2B
Sample Tissue:721_B
Antibody Dilution: 1.0µg/mlFCGR2B is supported by
BioGPS gene expression data to be expressed in 721_B

Please note: All products are 'FOR RESEARCH USE ONLY. NOT FOR USE IN DIAGNOSTIC OR THERAPEUTIC PROCEDURES'.