

HTRA1 antibody - N-terminal region

Rabbit Polyclonal Antibody

Catalog # AI14977

Product Information

Application	WB
Primary Accession	Q92743
Other Accession	NM_002775 , NP_002766
Reactivity	Human, Mouse, Rat, Pig, Bovine
Predicted	Human, Mouse, Rat, Pig, Bovine
Host	Rabbit
Clonality	Polyclonal
Calculated MW	51287

Additional Information

Gene ID	5654
Alias Symbol	ARMD7, HtrA, L56, ORF480, PRSS11
Other Names	Serine protease HTRA1, 3.4.21.-, High-temperature requirement A serine peptidase 1, L56, Serine protease 11, HTRA1, HTRA, PRSS11
Format	Liquid. Purified antibody supplied in 1x PBS buffer with 0.09% (w/v) sodium azide and 2% sucrose.
Reconstitution & Storage	Add 50 ul of distilled water. Final anti-HTRA1 antibody concentration is 1 mg/ml in PBS buffer with 2% sucrose. For longer periods of storage, store at 20°C. Avoid repeat freeze-thaw cycles.
Precautions	HTRA1 antibody - N-terminal region is for research use only and not for use in diagnostic or therapeutic procedures.

Protein Information

Name	HTRA1
Synonyms	HTRA, PRSS11
Function	Serine protease with a variety of targets, including extracellular matrix proteins such as fibronectin. HTRA1-generated fibronectin fragments further induce synovial cells to up-regulate MMP1 and MMP3 production. May also degrade proteoglycans, such as aggrecan, decorin and fibromodulin. Through cleavage of proteoglycans, may release soluble FGF-glycosaminoglycan complexes that promote the range and intensity of FGF signals in the extracellular space. Regulates the availability of insulin-like growth factors (IGFs) by cleaving IGF- binding proteins. Inhibits signaling mediated by

TGF-beta family members. This activity requires the integrity of the catalytic site, although it is unclear whether TGF-beta proteins are themselves degraded. By acting on TGF-beta signaling, may regulate many physiological processes, including retinal angiogenesis and neuronal survival and maturation during development. Intracellularly, degrades TSC2, leading to the activation of TSC2 downstream targets.

Cellular Location

Cell membrane. Secreted Cytoplasm, cytosol. Note=Predominantly secreted (PubMed:15208355). Also found associated with the plasma membrane (PubMed:21297635).

Tissue Location

Widely expressed, with strongest expression in placenta (at protein level). Secreted by synovial fibroblasts. Up-regulated in osteoarthritis and rheumatoid arthritis synovial fluids and cartilage as compared with non-arthritic (at protein level)

References

Zumbrunn J., et al. FEBS Lett. 398:187-192(1996).

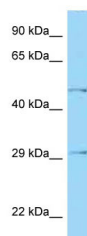
Crowl R.M., et al. Submitted (JUN-1999) to the EMBL/GenBank/DDBJ databases.

Mural R.J., et al. Submitted (SEP-2005) to the EMBL/GenBank/DDBJ databases.

Hu S.I., et al. J. Biol. Chem. 273:34406-34412(1998).

De Luca A., et al. J. Histochem. Cytochem. 52:885-892(2004).

Images



WB Suggested Anti-HTRA1 Antibody Titration: 1.0 µg/ml
Positive Control: Fetal Kidney

Please note: All products are 'FOR RESEARCH USE ONLY. NOT FOR USE IN DIAGNOSTIC OR THERAPEUTIC PROCEDURES'.