

HRH4 antibody - middle region

Rabbit Polyclonal Antibody

Catalog # AI14981

Product Information

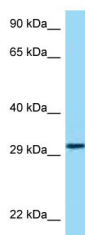
Application	WB
Primary Accession	B2KJ48
Other Accession	NM_001143828 , NP_001137300
Reactivity	Human, Pig
Predicted	Human, Pig
Host	Rabbit
Clonality	Polyclonal
Calculated MW	33 kDa

Additional Information

Alias Symbol	AXOR35, BG26, GPCR105, GPRv53, H4, H4R, HH4R, MGC133027
Format	Liquid. Purified antibody supplied in 1x PBS buffer with 0.09% (w/v) sodium azide and 2% sucrose.
Reconstitution & Storage	Add 50 ul of distilled water. Final anti-HRH4 antibody concentration is 1 mg/ml in PBS buffer with 2% sucrose. For longer periods of storage, store at 20°C. Avoid repeat freeze-thaw cycles.
Precautions	HRH4 antibody - middle region is for research use only and not for use in diagnostic or therapeutic procedures.

Protein Information

Images



WB Suggested Anti-HRH4 Antibody Titration: 1.0 µg/ml
Positive Control: 721_B Whole CellHRH4 is strongly supported by BioGPS gene expression data to be expressed in Human 721_B cells