

RPS2 antibody - N-terminal region

Rabbit Polyclonal Antibody

Catalog # AI14983

Product Information

Application	WB
Primary Accession	P15880
Other Accession	NM_002952 , NP_002943
Reactivity	Human, Mouse, Rat, Rabbit, Zebrafish, Goat, Dog, Guinea Pig, Horse, Bovine, Yeast
Predicted Host	Human, Mouse, Rat, Zebrafish, Chicken, Goat, Dog
Clonality	Rabbit
Calculated MW	Polyclonal 31324

Additional Information

Gene ID	6187
Alias Symbol Other Names	LLREP3, MGC102851, MGC117344, MGC117345, S2 40S ribosomal protein S2, 40S ribosomal protein S4, Protein LLRep3, RPS2, RPS4
Format	Liquid. Purified antibody supplied in 1x PBS buffer with 0.09% (w/v) sodium azide and 2% sucrose.
Reconstitution & Storage	Add 50 ul of distilled water. Final anti-RPS2 antibody concentration is 1 mg/ml in PBS buffer with 2% sucrose. For longer periods of storage, store at 20°C. Avoid repeat freeze-thaw cycles.
Precautions	RPS2 antibody - N-terminal region is for research use only and not for use in diagnostic or therapeutic procedures.

Protein Information

Name	RPS2
Synonyms	RPS4
Function	Component of the ribosome, a large ribonucleoprotein complex responsible for the synthesis of proteins in the cell (PubMed: 23636399). The small ribosomal subunit (SSU) binds messenger RNAs (mRNAs) and translates the encoded message by selecting cognate aminoacyl-transfer RNA (tRNA) molecules (PubMed: 23636399). The large subunit (LSU) contains the ribosomal catalytic site termed the peptidyl transferase center (PTC), which catalyzes the formation of peptide bonds, thereby polymerizing the amino

acids delivered by tRNAs into a polypeptide chain (PubMed:[23636399](#)). The nascent polypeptides leave the ribosome through a tunnel in the LSU and interact with protein factors that function in enzymatic processing, targeting, and the membrane insertion of nascent chains at the exit of the ribosomal tunnel (PubMed:[23636399](#)). Plays a role in the assembly and function of the 40S ribosomal subunit (By similarity). Mutations in this protein affects the control of translational fidelity (By similarity). Involved in nucleolar processing of pre-18S ribosomal RNA and ribosome assembly (By similarity).

Cellular Location

Cytoplasm. Nucleus, nucleolus. Note=Probably localized to nucleolus and cytoplasm in complex with ZNF277.

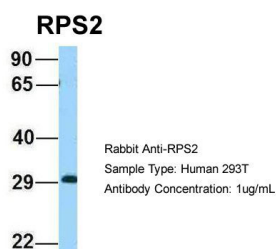
References

Slynn G.,et al.Nucleic Acids Res. 18:681-681(1990).
Ota T.,et al.Nat. Genet. 36:40-45(2004).
Mural R.J.,et al.Submitted (SEP-2005) to the EMBL/GenBank/DDBJ databases.
Vladimirov S.N.,et al.Eur. J. Biochem. 239:144-149(1996).
Swiercz R.,et al.Biochem. J. 386:85-91(2005).

Images



WB Suggested Anti-RPS2 Antibody Titration: 1.0 µg/ml
Positive Control: HepG2 Whole Cell
There is BioGPS gene expression data showing that RPS2 is expressed in HepG2



Host:Rabbit
Target Name:RPS2
Sample Tissue:Human 293T
Antibody Dilution: 1.0µg/ml
RPS2 is strongly supported by BioGPS gene expression data to be expressed in Human HEK293T cells

Please note: All products are 'FOR RESEARCH USE ONLY. NOT FOR USE IN DIAGNOSTIC OR THERAPEUTIC PROCEDURES'.