

MSR1 antibody - N-terminal region

Rabbit Polyclonal Antibody

Catalog # AI14984

Product Information

Application	WB
Primary Accession	P21757
Other Accession	NM_138715 , NP_619729
Reactivity	Human, Pig, Dog, Horse, Bovine
Predicted	Dog, Horse
Host	Rabbit
Clonality	Polyclonal
Calculated MW	49762

Additional Information

Gene ID	4481
Alias Symbol	CD204, SCARA1, SR-A, phSR1, phSR2, SRA
Other Names	Macrophage scavenger receptor types I and II, Macrophage acetylated LDL receptor I and II, Scavenger receptor class A member 1, CD204, MSR1, SCARA1
Format	Liquid. Purified antibody supplied in 1x PBS buffer with 0.09% (w/v) sodium azide and 2% sucrose.
Reconstitution & Storage	Add 50 ul of distilled water. Final anti-MSR1 antibody concentration is 1 mg/ml in PBS buffer with 2% sucrose. For longer periods of storage, store at 20°C. Avoid repeat freeze-thaw cycles.
Precautions	MSR1 antibody - N-terminal region is for research use only and not for use in diagnostic or therapeutic procedures.

Protein Information

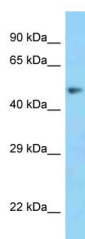
Name	MSR1
Synonyms	SCARA1
Function	Membrane glycoproteins implicated in the pathologic deposition of cholesterol in arterial walls during atherogenesis. Two types of receptor subunits exist. These receptors mediate the endocytosis of a diverse group of macromolecules, including modified low density lipoproteins (LDL) (PubMed: 2251254). Isoform III does not internalize acetylated LDL (PubMed: 9548586).

Cellular Location	Membrane; Single-pass type II membrane protein.
Tissue Location	Isoform I, isoform II and isoform III are expressed in monocyte-derived macrophages. Isoform I and isoform II are expressed in the liver, placenta and brain.

References

Matsumoto A.,et al.Proc. Natl. Acad. Sci. U.S.A. 87:9133-9137(1990).
Gough P.J.,et al.J. Lipid Res. 39:531-543(1998).
Nusbaum C.,et al.Nature 439:331-335(2006).
Mural R.J.,et al.Submitted (SEP-2005) to the EMBL/GenBank/DDBJ databases.
Emi M.,et al.J. Biol. Chem. 268:2120-2125(1993).

Images



WB Suggested Anti-MSR1 Antibody Titration: 1.0 µg/ml
Positive Control: Fetal Liver

Please note: All products are 'FOR RESEARCH USE ONLY. NOT FOR USE IN DIAGNOSTIC OR THERAPEUTIC PROCEDURES'.