

# CRHR1 antibody - N-terminal region

Rabbit Polyclonal Antibody

Catalog # AI14989

## Product Information

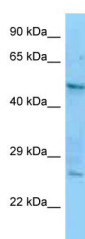
<b>Application</b>	WB
<b>Primary Accession</b>	<a href="#">P34998-2</a>
<b>Other Accession</b>	<a href="#">NM_004382</a> , <a href="#">NP_004373</a>
<b>Reactivity</b>	Human, Mouse, Rat, Rabbit, Zebrafish, Dog, Guinea Pig, Horse, Bovine
<b>Predicted</b>	Human, Mouse, Rat, Rabbit, Zebrafish, Pig, Chicken, Dog, Guinea Pig, Horse, Bovine
<b>Host</b>	Rabbit
<b>Clonality</b>	Polyclonal
<b>Calculated MW</b>	48 kDa

## Additional Information

<b>Alias Symbol</b>	CRF-R, CRF1, CRFR1, CRH-R1h, CRHR, CRHR1L, CRHR1f, CRF-R1, CRFR-1, CRH-R1, CRF-R-1, CRH-R-1
<b>Format</b>	Liquid. Purified antibody supplied in 1x PBS buffer with 0.09% (w/v) sodium azide and 2% sucrose.
<b>Reconstitution &amp; Storage</b>	Add 50 ul of distilled water. Final anti-CRHR1 antibody concentration is 1 mg/ml in PBS buffer with 2% sucrose. For longer periods of storage, store at 20°C. Avoid repeat freeze-thaw cycles.
<b>Precautions</b>	CRHR1 antibody - N-terminal region is for research use only and not for use in diagnostic or therapeutic procedures.

## Protein Information

## Images



WB Suggested Anti-CRHR1 Antibody Titration: 1.0 µg/ml  
Positive Control: A549 Whole Cell  
CRHR1 is strongly supported by BioGPS gene expression data to be expressed in Human A549 cells

Please note: All products are 'FOR RESEARCH USE ONLY. NOT FOR USE IN DIAGNOSTIC OR THERAPEUTIC PROCEDURES'.