

GHSR antibody - C-terminal region

Rabbit Polyclonal Antibody

Catalog # AI14990

Product Information

Application	WB
Primary Accession	Q92847
Other Accession	NM_198407 , NP_940799
Reactivity	Human, Mouse, Rat, Rabbit, Dog, Guinea Pig, Horse, Bovine, Sheep
Predicted	Human, Mouse, Rat, Rabbit, Pig, Dog, Guinea Pig, Bovine, Sheep
Host	Rabbit
Clonality	Polyclonal
Calculated MW	41329

Additional Information

Gene ID	2693
Other Names	Growth hormone secretagogue receptor type 1, GHS-R, GH-releasing peptide receptor, GHRP, Ghrelin receptor, GHSR
Format	Liquid. Purified antibody supplied in 1x PBS buffer with 0.09% (w/v) sodium azide and 2% sucrose.
Reconstitution & Storage	Add 50 ul of distilled water. Final anti-GHSR antibody concentration is 1 mg/ml in PBS buffer with 2% sucrose. For longer periods of storage, store at 20°C. Avoid repeat freeze-thaw cycles.
Precautions	GHSR antibody - C-terminal region is for research use only and not for use in diagnostic or therapeutic procedures.

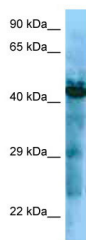
Protein Information

Name	GHSR
Function	Receptor for ghrelin, coupled to G-alpha-11 proteins. Stimulates growth hormone secretion. Also binds other growth hormone releasing peptides (GHRP) (e.g. Met-enkephalin and GHRP-6) as well as non-peptide, low molecular weight secretagogues (e.g. L-692,429, MK- 0677, adenosine).
Cellular Location	Cell membrane; Multi-pass membrane protein.
Tissue Location	Pituitary and hypothalamus.

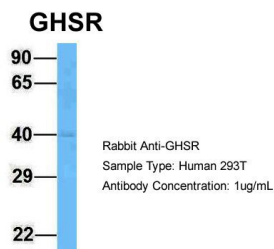
References

Howard A.D.,et al.Science 273:974-977(1996).
Petersenn S.,et al.Endocrinology 142:2649-2659(2001).
Kopatz S.A.,et al.Submitted (JUN-2003) to the EMBL/GenBank/DDBJ databases.
Mural R.J.,et al.Submitted (SEP-2005) to the EMBL/GenBank/DDBJ databases.
Smith R.G.,et al.Endocrine 14:9-14(2001).

Images



WB Suggested Anti-GHSR Antibody Titration: 1.0 µg/ml
Positive Control: ACHN Whole Cell



Host:Rabbit
Target Name:GHSR
Sample Tissue:Human 293T
Antibody Dilution: 1.0µg/ml

Please note: All products are 'FOR RESEARCH USE ONLY. NOT FOR USE IN DIAGNOSTIC OR THERAPEUTIC PROCEDURES'.