

NCR1 antibody - N-terminal region

Rabbit Polyclonal Antibody

Catalog # AI15000

Product Information

Application	WB
Primary Accession	O76036
Other Accession	NM_004829 , NP_004820
Reactivity	Human
Predicted	Human
Host	Rabbit
Clonality	Polyclonal
Calculated MW	34480

Additional Information

Gene ID	9437
Alias Symbol	CD335, FLJ99094, LY94, NK-p46, NKP46
Other Names	Natural cytotoxicity triggering receptor 1, Lymphocyte antigen 94 homolog, NK cell-activating receptor, Natural killer cell p46-related protein, NK-p46, NKp46, hNKp46, CD335, NCR1, LY94
Format	Liquid. Purified antibody supplied in 1x PBS buffer with 0.09% (w/v) sodium azide and 2% sucrose.
Reconstitution & Storage	Add 50 ul of distilled water. Final anti-NCR1 antibody concentration is 1 mg/ml in PBS buffer with 2% sucrose. For longer periods of storage, store at 20°C. Avoid repeat freeze-thaw cycles.
Precautions	NCR1 antibody - N-terminal region is for research use only and not for use in diagnostic or therapeutic procedures.

Protein Information

Name	NCR1
Synonyms	LY94
Function	Cytotoxicity-activating receptor that may contribute to the increased efficiency of activated natural killer (NK) cells to mediate tumor cell lysis.
Cellular Location	Cell membrane; Single-pass type I membrane protein
Tissue Location	Selectively expressed by both resting and activated NK cells.

References

Pessino A.,et al.J. Exp. Med. 188:953-960(1998).

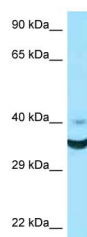
Lin L.,et al.Submitted (JUL-2003) to the EMBL/GenBank/DDBJ databases.

Grimwood J.,et al.Nature 428:529-535(2004).

Mural R.J.,et al.Submitted (JUL-2005) to the EMBL/GenBank/DDBJ databases.

Biassoni R.,et al.J. Cell. Mol. Med. 7:376-387(2003).

Images



WB Suggested Anti-NCR1 Antibody Titration: 1.0 µg/ml
Positive Control: HCT15 Whole Cell

Please note: All products are 'FOR RESEARCH USE ONLY. NOT FOR USE IN DIAGNOSTIC OR THERAPEUTIC PROCEDURES'.