

INF2 antibody - C-terminal region

Rabbit Polyclonal Antibody

Catalog # AI15001

Product Information

Application	WB
Primary Accession	Q27J81
Other Accession	NM_022489 , NP_071934
Reactivity	Human, Mouse, Rat, Dog, Horse, Bovine
Predicted	Human, Mouse, Horse, Bovine
Host	Rabbit
Clonality	Polyclonal
Calculated MW	135624

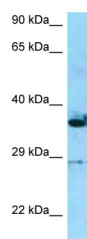
Additional Information

Gene ID	64423
Alias Symbol	C14orf151, C14orf173, DKFZp762A0214, FLJ22056, FSGS5, MGC13251, pp9484, CMTDIE
Other Names	Inverted formin-2, HBEBP2-binding protein C, INF2, C14orf151, C14orf173
Format	Liquid. Purified antibody supplied in 1x PBS buffer with 0.09% (w/v) sodium azide and 2% sucrose.
Reconstitution & Storage	Add 50 ul of distilled water. Final anti-INF2 antibody concentration is 1 mg/ml in PBS buffer with 2% sucrose. For longer periods of storage, store at 20°C. Avoid repeat freeze-thaw cycles.
Precautions	INF2 antibody - C-terminal region is for research use only and not for use in diagnostic or therapeutic procedures.

Protein Information

Name	INF2
Synonyms	C14orf151, C14orf173
Function	Severs actin filaments and accelerates their polymerization and depolymerization.
Cellular Location	Cytoplasm, perinuclear region
Tissue Location	Widely expressed. In the kidney, expression is apparent in podocytes and some tubule cells

Images



WB Suggested Anti-INF2 Antibody Titration: 1.0 µg/ml
Positive Control: HepG2 Whole Cell
INF2 is supported by
BioGPS gene expression data to be expressed in HepG2

Please note: All products are 'FOR RESEARCH USE ONLY. NOT FOR USE IN DIAGNOSTIC OR THERAPEUTIC PROCEDURES'.