

IL28B antibody - C-terminal region

Rabbit Polyclonal Antibody

Catalog # AI15004

Product Information

Application	WB
Primary Accession	Q8IZI9
Other Accession	NM_172139 , NP_742151
Reactivity	Human, Mouse, Rat, Rabbit, Pig, Dog, Horse
Predicted	Human, Mouse, Rat
Host	Rabbit
Clonality	Polyclonal
Calculated MW	21706

Additional Information

Gene ID	282617
Alias Symbol	IFNL3, IL-28B, IL28C, IL28B
Other Names	Interferon lambda-3, IFN-lambda-3, Cytokine Zcyto22, Interleukin-28B, IL-28B, Interleukin-28C, IL-28C, IFNL3, IL28B, IL28C, ZCYTO22
Target/Specificity	This antibody is pan-IL28 specific, as there is 100% homology to the human IL28A sequence, per http://www.uniprot.org/uniprot/Q8IZJ0 .
Format	Liquid. Purified antibody supplied in 1x PBS buffer with 0.09% (w/v) sodium azide and 2% sucrose.
Reconstitution & Storage	Add 50 ul of distilled water. Final anti-IL28B antibody concentration is 1 mg/ml in PBS buffer with 2% sucrose. For longer periods of storage, store at 20°C. Avoid repeat freeze-thaw cycles.
Precautions	IL28B antibody - C-terminal region is for research use only and not for use in diagnostic or therapeutic procedures.

Protein Information

Name	IFNL3
Synonyms	IL28B, IL28C, ZCYTO22
Function	Cytokine with antiviral, antitumour and immunomodulatory activities. Plays a critical role in the antiviral host defense, predominantly in the epithelial tissues. Acts as a ligand for the heterodimeric class II cytokine receptor composed of IL10RB and IFNLR1, and receptor engagement leads to the activation of the JAK/STAT signaling pathway resulting in the expression of

IFN-stimulated genes (ISG), which mediate the antiviral state. Has a restricted receptor distribution and therefore restricted targets: is primarily active in epithelial cells and this cell type-selective action is because of the epithelial cell-specific expression of its receptor IFNLR1. Seems not to be essential for early virus-activated host defense in vaginal infection, but plays an important role in Toll-like receptor (TLR)- induced antiviral defense. Plays a significant role in the antiviral immune defense in the intestinal epithelium. Exerts an immunomodulatory effect by up-regulating MHC class I antigen expression.

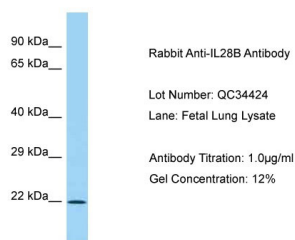
Cellular Location

Secreted.

References

Sheppard P.,et al.Nat. Immunol. 4:63-68(2003).
Kotenko S.V.,et al.Nat. Immunol. 4:69-77(2003).
Li M.C.,et al.Acta Pharmacol. Sin. 27:453-459(2006).
Grimwood J.,et al.Nature 428:529-535(2004).
Donnelly R.P.,et al.J. Interferon Cytokine Res. 30:555-564(2010).

Images



Host: Rabbit
Target Name: IL28B
Sample Tissue: Fetal Lung
Antibody Dilution: 1.0 µg/ml

Please note: All products are 'FOR RESEARCH USE ONLY. NOT FOR USE IN DIAGNOSTIC OR THERAPEUTIC PROCEDURES'.