

PAG1 antibody - C-terminal region

Rabbit Polyclonal Antibody

Catalog # AI15019

Product Information

Application	WB
Primary Accession	Q9NWQ8
Other Accession	NM_018440 , NP_060910
Reactivity	Human, Mouse, Rat, Rabbit, Pig, Dog, Guinea Pig, Horse, Bovine
Predicted	Human, Mouse, Rat, Pig, Dog, Guinea Pig, Horse, Bovine
Host	Rabbit
Clonality	Polyclonal
Calculated MW	46981

Additional Information

Gene ID	55824
Alias Symbol	CBP, FLJ37858, MGC138364, PAG
Other Names	Phosphoprotein associated with glycosphingolipid-enriched microdomains 1, Csk-binding protein, Transmembrane adapter protein PAG, Transmembrane phosphoprotein Cbp, PAG1, CBP, PAG
Format	Liquid. Purified antibody supplied in 1x PBS buffer with 0.09% (w/v) sodium azide and 2% sucrose.
Reconstitution & Storage	Add 50 ul of distilled water. Final anti-PAG1 antibody concentration is 1 mg/ml in PBS buffer with 2% sucrose. For longer periods of storage, store at 20°C. Avoid repeat freeze-thaw cycles.
Precautions	PAG1 antibody - C-terminal region is for research use only and not for use in diagnostic or therapeutic procedures.

Protein Information

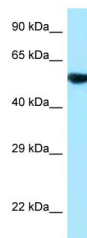
Name	PAG1
Synonyms	CBP, PAG
Function	Negatively regulates TCR (T-cell antigen receptor)-mediated signaling in T-cells and FCER1 (high affinity immunoglobulin epsilon receptor)-mediated signaling in mast cells. Promotes CSK activation and recruitment to lipid rafts, which results in LCK inhibition. Inhibits immunological synapse formation by preventing dynamic arrangement of lipid raft proteins. May be involved in cell adhesion signaling.

Cellular Location	Cell membrane; Single-pass type III membrane protein Note=Present in lipid rafts
Tissue Location	Ubiquitously expressed. Present in germinal center B-cells, plasma cells, T-cells, monocytes and platelets (at protein level).

References

Brdicka T.,et al.J. Exp. Med. 191:1591-1604(2000).
Ota T.,et al.Nat. Genet. 36:40-45(2004).
Mural R.J.,et al.Submitted (JUL-2005) to the EMBL/GenBank/DDBJ databases.
Brdickova N.,et al.FEBS Lett. 507:133-136(2001).
Brill L.M.,et al.Anal. Chem. 76:2763-2772(2004).

Images



WB Suggested Anti-PAG1 Antibody Titration: 1.0 µg/ml
Positive Control: 721_B Whole Cell

Please note: All products are 'FOR RESEARCH USE ONLY. NOT FOR USE IN DIAGNOSTIC OR THERAPEUTIC PROCEDURES'.