

NPIP antibody - middle region

Rabbit Polyclonal Antibody

Catalog # AI15027

Product Information

Application	WB
Primary Accession	Q9UND3
Other Accession	NM_006985 , NP_008916
Reactivity	Human
Predicted	Human
Host	Rabbit
Clonality	Polyclonal
Calculated MW	40133

Additional Information

Gene ID	642799;9284
Alias Symbol Other Names	FLJ42525, FLJ44848, morpheus, NPIP Nuclear pore complex-interacting protein family member A1, Nuclear pore complex-interacting protein, NPIP, NPIPA1, NPIP
Format	Liquid. Purified antibody supplied in 1x PBS buffer with 0.09% (w/v) sodium azide and 2% sucrose.
Reconstitution & Storage	Add 50 ul of distilled water. Final anti-NPIP antibody concentration is 1 mg/ml in PBS buffer with 2% sucrose. For longer periods of storage, store at 20°C. Avoid repeat freeze-thaw cycles.
Precautions	NPIP antibody - middle region is for research use only and not for use in diagnostic or therapeutic procedures.

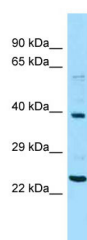
Protein Information

Name	NPIPA1
Synonyms	NPIP
Cellular Location	Nucleus, nuclear pore complex. Nucleus membrane. Note=Colocalizes with nuclear pore complex protein NUP62
Tissue Location	Widely expressed..

References

Johnson M.E.,et al.Nature 413:514-519(2001).
Loftus B.J.,et al.Genomics 60:295-308(1999).
Martin J.,et al.Nature 432:988-994(2004).

Images



WB Suggested Anti-NPIP Antibody Titration: 1.0 µg/ml
Positive Control: Hela Whole Cell

Please note: All products are 'FOR RESEARCH USE ONLY. NOT FOR USE IN DIAGNOSTIC OR THERAPEUTIC PROCEDURES'.